

# SCHOOL LEAVERS QUICK GUIDE

2025/2026



A Levels

Apprenticeships

Vocational courses

T Levels

On course for  
**Success!**



**APPLY NOW!**

Ofsted  
Good  
Provider

Version 1

# COURSE LEVELS AND ENTRY REQUIREMENTS

At college, you can choose between a wide-range of courses that start at different levels. Each course will have different entry requirements based on GCSE grades and potentially your experience. Take a look at what qualifications are available at different levels and their entry requirements.



## ENTRY LEVEL

Ideal if you don't have any existing qualifications and want to develop basic skills and knowledge.

- Functional Skills
- Certificate of Achievement.

### ENTRY REQUIREMENTS

No formal qualifications required

## LEVEL 1

An ideal introduction to a specific subject area.

- GCSEs and Functional Skills
- BTEC Level 1 Award, Certificate or Diploma
- Supported Internship
- NVQ Level 1.

### ENTRY REQUIREMENTS

GCSE English Language and Maths at grade 2-9

## LEVEL 2

Ideal to build on a foundation of subject specific knowledge and skills.

- Functional Skills
- Intermediate Apprenticeship
- Supported Internship
- BTEC First Diploma
- BTEC Level 2
- NVQ Level 2.

### ENTRY REQUIREMENTS

GCSE English Language and Maths at grade 3-9

**OR**

Successful completion of a relevant Level 1 course.

## LEVEL 3

Ideal to refine your specialist skills and knowledge to prepare for higher-level study or employment.

- A Levels
- T Levels
- Advanced Apprenticeship
- BTEC Extended Diploma.

### ENTRY REQUIREMENTS\*

Five GCSEs at grade 4-9 including English Language and Maths

**OR**

Successful completion of a relevant Level 2 course.

\*Please visit [wnc.ac.uk](http://wnc.ac.uk) to view specific entry requirements for Level 3 courses including T Levels and A Levels.

## LEVEL 4 AND ABOVE

Equivalent to a foundation degree, and the first, second and third year of a 'traditional' undergraduate degree. If university isn't right for you, you can opt to study an Higher National Certificate, Higher National Diploma or higher apprenticeships as alternatives. Whilst this isn't something you need to pick now, our Derby Road campus is home to Nottingham Trent University in Mansfield which means you can progress onto higher-level qualifications without having to go far.

### ENTRY REQUIREMENTS

Specific to the individual university and/or course.

# OUR COURSES



**ANIMAL CARE/MANAGEMENT**  
(Levels 1-3)



**BUSINESS**  
(Levels 1-3)



**CONSTRUCTION CRAFTS AND BUILDING SERVICES**  
(Entry Level 3-Level 3)

- Bricklaying
- Carpentry and Joinery
- Electrical Installations
- Plastering
- Plumbing and Heating



**CREATIVE ARTS**  
(Levels 1-3)

- Art and Design
- Creative Digital Media
- Performing Arts



**DIGITAL, COMPUTER SCIENCE AND IT**  
(Levels 1-3)



**EDUCATION AND EARLY YEARS**  
(Levels 1-3)




**ENGINEERING**  
(Levels 1-3)



**ESOL - ENGLISH FOR SPEAKERS OF OTHER LANGUAGES**  
(Entry Level 3-Level 2)



**ESPORTS**  
(Levels 2-3)




**FABRICATION AND WELDING**  
(Levels 1-2)




**STEP-UP AND PROGRESS (FOUNDATION LEARNING)**  
(Entry Level 2-Level 2)

- Transition to Independence
- Transition to Further Study
- Transition to Employment



**HAIR AND BEAUTY**  
(Levels 1-3)

- Barbering
- Beauty Therapy
- Hairdressing
- Make-up Artistry



**HEALTHCARE AND HEALTH SCIENCES**  
(Levels 2-3)

- Working in the Health Sector
- Working in Adult Social Care



**HOSPITALITY AND CATERING**  
(Levels 1-3)



**MOTOR VEHICLE**  
(Levels 1-3)



**SPORT**  
(Levels 1-3)

- CIMSPA Fitness or Coaching
- MTFC Performance Programme (Men or Women)
- Sport and Exercise Science



**TRAVEL AND TOURISM**  
(Levels 2-3)



**UNIFORMED PROTECTIVE SERVICES**  
(Levels 1-3)




**A LEVELS**

Applied Science*	Geography
Art and Photography	History
Biology	Law
Business Studies	Maths
Chemistry	Mathematical Studies
Computer Science	Media
Criminology*	Philosophy
Economics	Physics
English Language	Politics
English Literature	Psychology
Environmental Studies	Religious Studies
Film Studies	Sociology
Further Maths	Sport and Exercise Science*

\*A Level students can choose to study one vocational option alongside two A Level choices, rather than three A Levels.

**APPRENTICESHIPS**

- Automotive
- Business, Retail and Management
- Construction
- Digital and IT
- Education and Early Years
- Engineering
- Hair and Beauty
- Finance
- Transport and Logistics



**TRAVEL PASS**

VISION West Nottinghamshire College

NTU Nottingham Trent University



ITSO

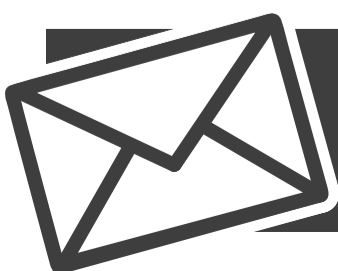
**TRAVEL PASS**

**UNLEASH YOUR FREEDOM**

We have partnered with local bus operators to provide students and apprentices with a flexible and cost-effective transport service.

Find out more  
[wnc.ac.uk/travel-pass](http://wnc.ac.uk/travel-pass)

Find out about our student support services  
[wnc.ac.uk/support](http://wnc.ac.uk/support)

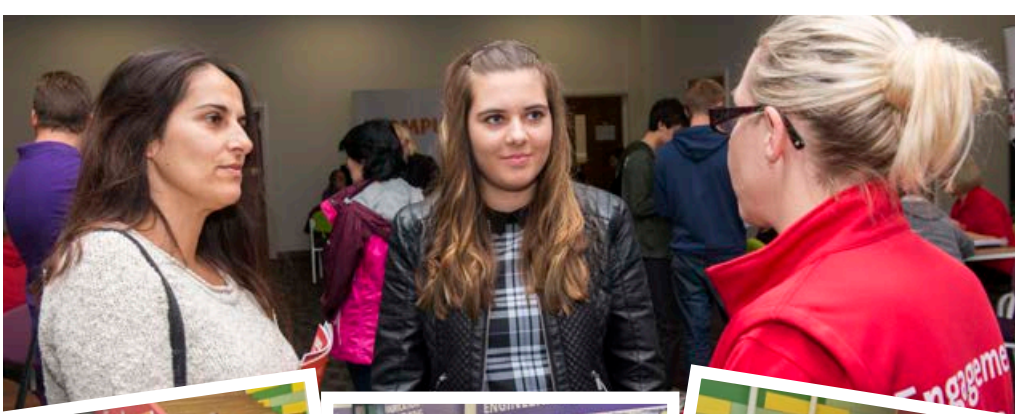


## LET'S KEEP IN TOUCH!

Scan the QR code and fill in your details so we can send you information about college events, new courses, student support services and college news!



Please note: Course information included within the guide may be subject to change. For full, up-to-date information on all of our college courses please visit [wnc.ac.uk](http://wnc.ac.uk), or call 0808 100 3626 to speak to us directly.



# COME ALONG TO AN OPEN EVENT!

Our open events are a great opportunity for you to meet the teachers, learn more about our courses and book onto a campus tour.

## COLLEGE OPEN EVENTS

Saturday 5 October | 10am - 1pm  
Saturday 16 November | 10am - 1pm  
Thursday 6 March | 5.30 - 7.30pm  
Saturday 14 June | 10am - 1pm

## A LEVELS

Thursday 26 September | 5.30 - 7.30pm  
Wednesday 27 November | 5.30 - 7.30pm  
Thursday 23 January | 5.30 - 7.30pm

## APPRENTICESHIPS

Wednesday 12 February | 5.30 - 7.30pm  
Thursday 26 June | 5.30 - 7.30pm

## ENGINEERING, FABRICATION AND WELDING, AND MOTOR VEHICLE

Thursday 6 February | 5.30 - 7.30pm

**BOOK NOW**

**[wnc.ac.uk/events](http://wnc.ac.uk/events)**



 [wnc.ac.uk](http://wnc.ac.uk)

 0808 100 3626

 [enquiries@wnc.ac.uk](mailto:enquiries@wnc.ac.uk)

 [westnottscollge](#)

 [visionwestnotts](#)

 [westnotts](#)

 [westnottscollge](#)