

# STUDENT FINANCIAL SUPPORT



Key information for students,  
parents and staff

**Academic year 2017/18**

# INTRODUCTION

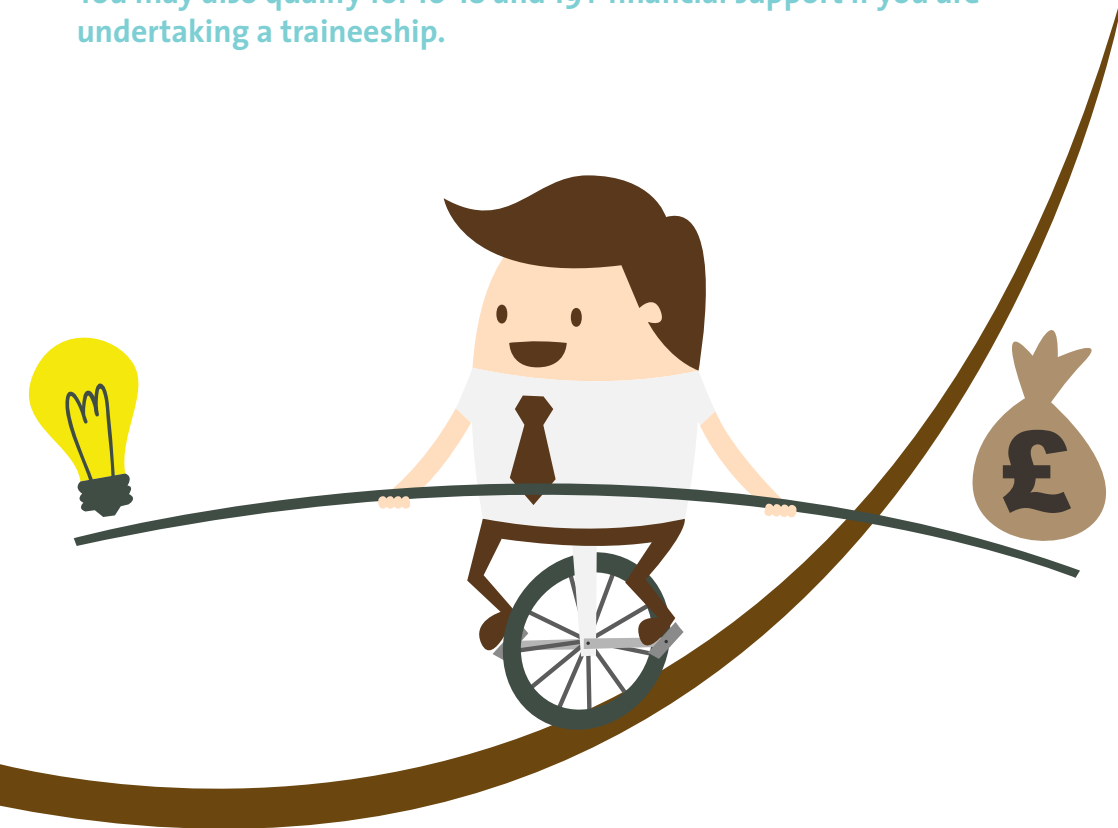
**Whether a student is aged 16-18 or over 19, depending on their personal circumstances, they may be able to access funding to help them through their course.**

If students believe they are eligible for financial support, they should complete the financial support application form which can be collected from any college reception point and the financial support office at the Derby Road campus.

We advise that students complete the form as soon as possible as funds are limited. Financial support is awarded based on eligibility and the date of application. The form must be completed in full and evidence of any household income received from employment and/or any benefits will be required.

Payment of any financial support is conditional based on attendance, motivation, and academic progress, and may be withdrawn if progress and standards drop. All payments made to students will be into their own personal bank accounts.

**You may also qualify for 16-18 and 19+ financial support if you are undertaking a traineeship.**



## **16-18 VULNERABLE BURSARY FUND**

This is a fund of £1,200 per year. In the first instance the student will be given £2.41 per timetabled day at college for a meal. The remaining bursary is paid in weekly instalments. These instalments are paid in arrears so that attendance can be monitored. Part-time students will receive pro-rata payments. Students may also apply for additional support through the 16-18 Student Support Fund if they meet the eligibility criteria.

### **WHO CAN RECEIVE IT?**

Students who are under the age of 19 on 31 August 2017 who:

- currently live in care (as defined by social services)
- are leaving or have recently left social care
- are in receipt of Income Support or Universal Credit in their own name
- are in receipt of both Employment and Support Allowance/Universal Credit and Disability Living Allowance/Personal Independence Payments in their own name.

## **16-18 STUDENT SUPPORT FUND**

This is a fund of £90 per year which is paid in three £30 instalments in October, January and April. The fund may offer additional support with:

- kit and uniform costs
- 50% contribution towards trips and visits up to a maximum of £250 per year
- 50% contribution towards university interview travel costs (public transport only)
- exam resit costs
- transport costs for those who live more than one mile from college and do not live on the college bus route (to a maximum of 18 miles)
- transport costs for those students attending a placement and/or have timetabled evenings and weekends.

### **WHO CAN RECEIVE IT?**

Students who are under the age of 19 on 31 August 2017 who:

- are studying on a full-time course
- have an annual household income below £25,000 or up to £30,000 if there are three or more dependent children living in the household (aged up to 19 and in full-time education or aged 0-4).

## FREE COLLEGE MEALS

All eligible students are entitled to an allowance of £2.41 per timetabled day in college to support with the costs of their meals. This also includes support with meals when a student attends a placement which is part of their course.

### WHO CAN RECEIVE IT?

To be eligible for free meals you must be between 16 and 18-years-old on 31 August 2017 or aged between 19 and 24-years-old with an Education Health and Care Plan (EHC Plan). In addition to this either you or your parents/carers must be in receipt of at least one of the following benefits:

- Income Support.
- Income-based Jobseeker's Allowance.
- Income-related Employment and Support Allowance (ESA).
- Child Tax Credit (provided you are not entitled to Working Tax Credit) and have an annual gross income of no more than £16,190
- Universal Credit.
- Support under part VI of the Immigration and Asylum Act 1999.
- The guarantee element of State Pension Credit.
- Working Tax Credit run-on – paid four weeks after you stop qualifying for Working Tax Credit.

## 19+ STUDENT SUPPORT FUND

This is a fund of £500 per year which is paid in ten instalments of £50. These instalments are paid in arrears starting in October 2017 and finishing in July 2018. Part-time students will be case assessed at our discretion and may be awarded based on individual circumstances. The fund may also support with:

- transport costs for those students attending a placement
- 50% contribution towards university travel costs (public transport only)
- exam resit costs.

### WHO CAN RECEIVE IT?

Students who are 19 years of age or above on 31 August 2017 who:

- are studying on a full-time course
- are studying on an eligible part-time programme
- have an annual household income below £25,000
- have an annual household income of below £30,000 with three or more dependent children aged up to 19 in full-time education, or aged 0-4 living in the household.

## ADVANCED LEARNER LOAN

You can apply for an Advanced Learner Loan to help with the costs of a college or training course if you're 19 or older. The loan will cover tuition costs so that students do not have to pay fees up front. The loan doesn't depend on your income and there are no credit checks. You can get independent money advice from the Money Advice Service ([www.moneyadviceservice.org.uk](http://www.moneyadviceservice.org.uk)).

### WHO CAN RECEIVE IT?

Students who are 19 years of age or above on 31 August 2017 who:

- are studying one or more approved learning aims at Levels 3, 4, 5 and 6.

For further information about the Learner Loan or to make an application please visit [www.gov.uk/advanced-learning-loans/how-to-claim](http://www.gov.uk/advanced-learning-loans/how-to-claim).

## ADVANCED LEARNER LOAN BURSARY

The Advanced Learner Loan Bursary aims to support students with a lower household income. Support is available for a range of course costs including additional learning support and childcare costs. Payments for part-time students will be pro-rata.

### WHO CAN RECEIVE IT?

Students who are 19 years of age or above on 31 August 2017 who:

- are in receipt of an Advanced Learner Loan
- have an annual household income below £25,000
- have an annual household income of below £30,000 if there are three or more dependent children living in the household (aged up to 19 and in full-time education or aged 0-4).



## CHILDCARE – CARE TO LEARN

The Care to Learn scheme can help to pay for Ofsted registered childcare whilst you study. The scheme pays up to £160 per week and there is no limit on the number of children that can be funded. Your childcare provider is paid from the beginning of your course if you apply either:

before your course starts  
within 28 days of starting your course.

If you apply after that, your childcare provider will only be paid from the beginning of the week that your application was received. Further information and the application form can be accessed by visiting **[www.gov.uk/care-to-learn](http://www.gov.uk/care-to-learn)**

### WHO CAN RECEIVE IT?

Students who are under 20 years of age on 31 August 2017 who:

- are studying on an eligible public funded programme
- are the main carer for the child
- live in England
- are either a British citizen or a national of a European Economic Area (EEA).

## 20+ CHILDCARE FUND

There is funding available to pay for Ofsted registered childcare for a maximum of two children aged 0-5 on 31 August 2017. This will be a maximum of £160 per week per child for timetabled days in college. Please note all funds will be paid directly to the chosen childcare provider. If your child is eligible for 15 or 30 hours per week free early education, these must be used to cover your required sessions; you may then apply for additional cover, if required.

### WHO CAN RECEIVE IT?

Students who are 20 years of age or above on 31 August 2017 who:

- are studying on a full-time course
- are studying on an eligible part-time programme funded through an Advanced Learner Loan
- are the main carer for the child
- have an annual household income below £25,000
- have an annual household income of below £30,000 if there are three or more dependent children living in the household (aged up to 19 and in full-time education or aged 0-4).

## TO QUALIFY FOR HELP WITH CHILDCARE FUNDING:

- Your childcare provider must be Ofsted registered.
- You must be applying for childcare support for a maximum of two children between 0-5 years of age on 31 August 2017.
- You must be the main carer for the child.
- If your child is eligible for 15 or 30 hours per week free early education, these must be used to cover your required sessions; you may then apply for additional cover, if required.
- If your application is approved, payments will be made directly to the childcare provider on a monthly basis by BACS payment only.

## SUBSIDISED TRANSPORT

A subsidised college bus service is available to all of our students from a range of locations across the area. Individuals may need to make a one-off contribution of £95 dependent on household income. Each student should receive a bus declaration form through the post, please ensure this is completed and returned as soon as possible.

**Please note:** Students cannot travel without presenting their travel authorised student ID card to the driver.



