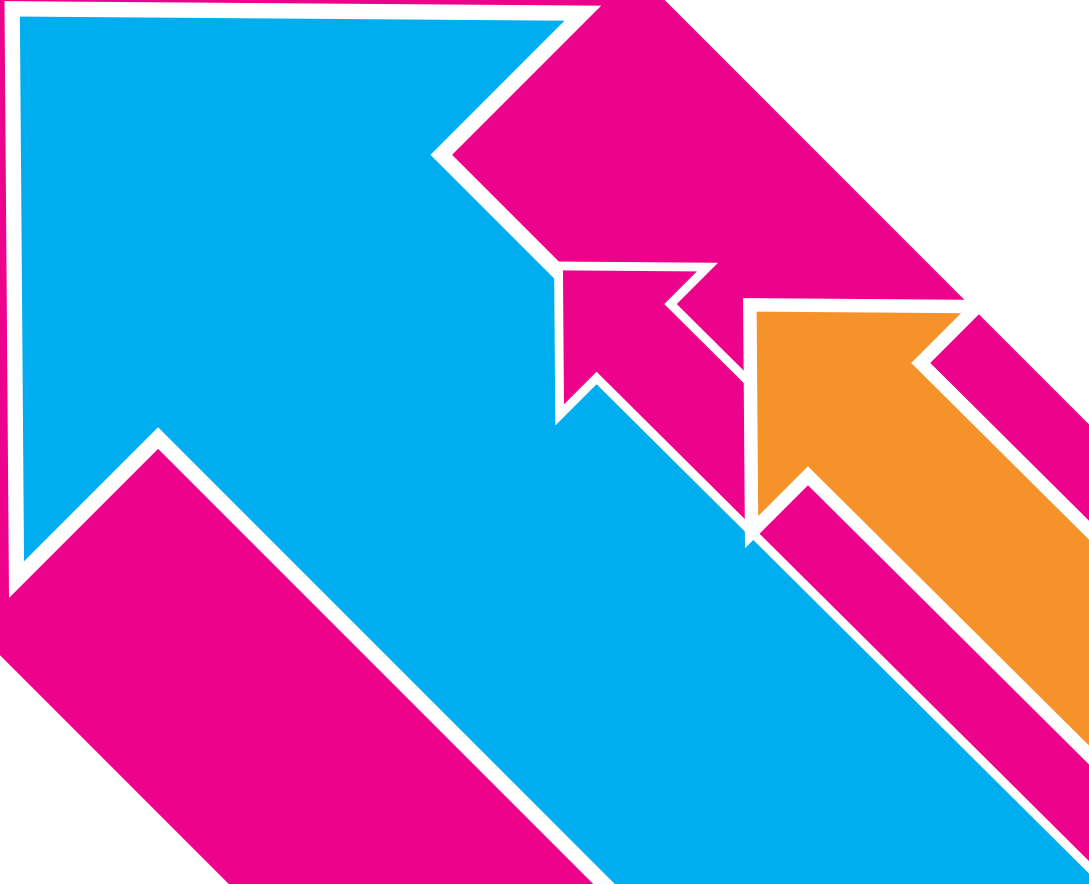




WELCOME

BOOKLET



WELCOME

TO VISION WEST NOTTINGHAMSHIRE COLLEGE

On behalf of everyone at West Nottinghamshire College, I'm delighted that you are choosing to continue your studies with us. The college exists for its students and we are determined to support you into rewarding and enjoyable careers. What's more, we work tirelessly with employers and universities to ensure that the skills our students develop don't just help them with their next career step, but give them skills for the future.

Our teachers bring great experience and knowledge of the sectors they teach, as well as a determination to encourage and support you to achieve your very best. Support staff will ensure that your individual needs are met, whether that's gaining entry into a top university, assisting with a learning difficulty or disability, or dealing with life's challenges. Everyone you meet in the college will treat you with respect, friendliness and a sincere desire to see you do well.

Our college has outstanding facilities to ensure that you're able to practice in industry-standard settings.

Our IT facilities are among the best, and if you need to study outside the classroom, our laptop loan service ensures you stay up-to-date with online learning.

We are building on our enrichment offer for students. As a student here you can take part in fun and inspiring activities, such as clubs, societies, sports, fundraising and volunteering projects. You will also get the chance to gain valuable experience through undertaking work placements or apprenticeships with reputable employers within the local area.

I look forward to meeting as many of you as possible in the forthcoming months and welcoming you to a truly exceptional college.



Andrew Cropley

Principal and Chief Executive Officer



CONTENTS

The enrolment journey	4
Meet our learner engagement co-ordinator	6
The Applicant Zone	7
The Applicant Zone FAQs	8
Support services	10
What our students say...	12
Your study programme	14
Working together	16
College bus service	18

OUR MISSION

To provide skills for all students, employer partners and our community to thrive.

OUR VISION

A force for raising aspirations across our communities, where high-performing staff encourage students to stretch the boundaries of their potential and, in partnership with employers, develop the workforce of the future.

OUR VALUES

Respect
Integrity
Collaboration
High Expectations
Responsibility

Not sure you have chosen the right course?

Don't worry, book a careers advice appointment with our careers team who can help you explore your options.

 **01623 413 325**

 **careers@wnc.ac.uk**

Applications can be transferred easily to ensure you are on the right path.

THE ENROLMENT JOURNEY

Unsure about what happens next?

Here's a quick reminder of what happens at each stage of your application.

APPLICATION

1

If you have applied online, you're able to track your progress using myVISION; our online portal which stores those important details, and provides you with information relating to your application. Applicants can also visit The Applicant Zone on the college's website for up-to-date information and activities on the countdown to college. Visit wnc.ac.uk/applicants to find out more.

2

OFFER

If you meet the entry requirements for your course, you will be sent an automatic conditional offer via email (except Foundation Studies and MTFC course).

3

MEET THE TUTOR EVENT

You will be invited to a meet the tutor event hosted by the curriculum area to tell you more about the course and expectations. This is mandatory to meet the conditions of your offer.

4

KEEPING IN TOUCH

We will send out key information on finance, support, transport and advice on making a smooth transition into college.

5 ACCEPTANCE

You will be asked to accept your offer either by text, email or by updating your myVISION. You can accept your offer anytime once you have received it.

6 ENROLMENT

All applicants must enrol before you can start your course where you will become an official West Notts student. We will send out an invite in early summer detailing your enrolment date and time for your chosen course.

At enrolment, you will receive your timetable, information on the West Notts College travel pass, ID card, lanyard, and details of the bursaries or grants you can apply for.

If you're on holiday on the day of enrolment, do not worry; just ensure you contact the college and arrange an alternative time and date with us.

This can be done via telephone **0808 100 3626** or emailing **enquires@wnc.ac.uk**

7 INDUCTION AND TRANSITION

We put together a week long induction programme with the aim of assisting your transition to becoming a college student. This programme will include a welcome fair, induction sessions, tutorials and much more!

Do not worry if you do not meet the requirements of your conditional offer. Contact the college on **0808 100 3626** as soon as possible, as an alternative level or course may be available.

MEET OUR LEARNER ENGAGEMENT CO-ORDINATOR

Hi, I'm Rachel!

My role at the college is to make sure you have the smoothest and most enjoyable applicant journey possible. I will keep in touch with you throughout your journey by sending a number of updates via email, post, text and on our college Facebook page.

My advice to any applicant is to simply get involved! Statistics show the more an applicant engages during their journey, the more comfortable they feel when joining us full-time.

I'm here to help ease that transition from school to college, by making sure you:

- Know what support services we offer at college, including the college bus, student finance and much more
- Know what to expect on your first day at college
- Understand the induction process
- Have someone to answer any questions or concerns during your journey and while at college

- Have the opportunity to take part in activities prior to starting college – mainly via our college applicant zone and taster sessions
- Understand progression pathways.

- 
visionwestnotts

@westnotts

@westnottscollege

@westnottscollege



I'm here to help!

If you do have further questions you can always contact me.

 **01623 900 990**

 **learner.engagement@wnc.ac.uk**

THE APPLICANT ZONE

This dedicated zone on our website is a great area to see so much more about the college and your chosen course. You'll be able to watch current and past student videos, experience a virtual tour of your chosen curriculum area and view galleries of previous trips, guest speakers and visits that students have been on.



ASK YOUR TEACHER

If you've any specific questions about your course, fill in our online form and a course teacher will reply to you directly.

TRACK YOUR JOURNEY

Once you've applied, find out what your next steps are in the application and enrolment process.

VIRTUAL TOURS

These tours will give you the opportunity to take a look at our fantastic facilities prior to starting your course.

KIT LISTS

Find out what equipment and resources you will need before you join college.



Scan to visit the applicant zone

THE APPLICANT ZONE FAQS

We've spoken to hundreds of applicants and pulled together a list of frequently asked questions, to help make the transition to college that little bit smoother.

Q: When does college start?

A: Monday 2 September 2024 is the first day of term. However, this doesn't necessarily mean this is the first day of your course. Please refer to your induction timetable.

Q: What days will I be in college?

A: You will find this out at enrolment when you receive your timetable.

Q: Can I change my course?

A: If you're thinking about changing your course before you start college, you will need to get in touch with us as soon as possible so we can discuss your options.
Call **0808 100 3626**

Q: Is there anything I can join in with before starting college?

A: Yes, visit The Applicant Zone to find out more and take part in the applicant activities. Visit **wnc.ac.uk/applicants**

Q: When do I enrol?

A: Each course has a different enrolment date. You will receive an invite detailing when your enrolment date is, during the start of summer.

Q: Do I need to bring anything with me?

A: Some courses require you to have specialist equipment or resources. For some courses you may also need safety equipment. Kit lists can be found on the college website or give us a call on **0808 100 3626** and ask to be put through to your course area to discuss what kit is required.

Scan to view kit lists

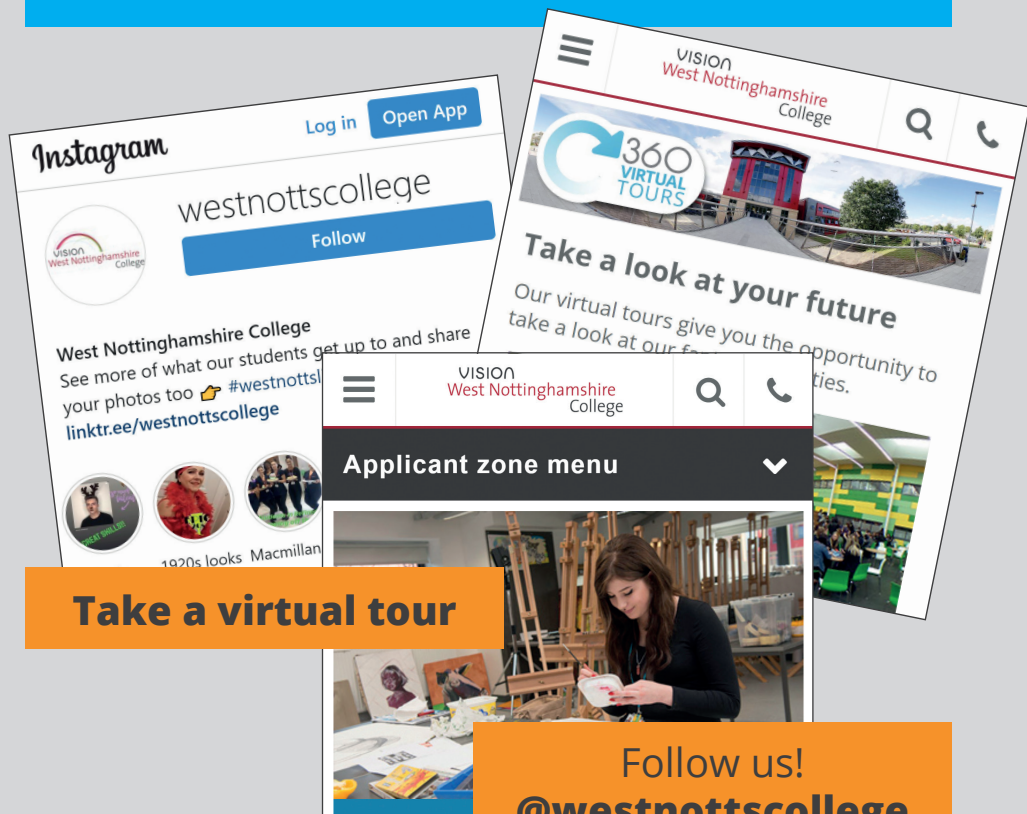


NOT ANSWERED YOUR QUESTION?

Contact our Learner Engagement Team to discuss further.

 **01623 900 990**

 **learner.engagement@wnc.ac.uk**



Instagram Log in Open App

westnottscolllege Follow

VISION West Nottinghamshire College

West Nottinghamshire College
See more of what our students get up to and share your photos too #westnotts linktr.ee/westnottscolllege

1920s looks Macmillan

VISION West Nottinghamshire College

360 VIRTUAL TOURS

Take a look at your future
Our virtual tours give you the opportunity to take a look at our facilities.

Applicant zone menu

Follow us!
@westnottscolllege

Take a virtual tour

Why not ask your teacher?

Send your questions directly to your course teacher by either scanning the code or visiting The Applicant Zone.



SUPPORT SERVICES

We're here for you. We have a wide range of support services at the college. For detailed information about any of the services, please contact the relevant area below.

The Inclusions Service (ALS)

Friendly and professional support and guidance for students with a wide range of learning needs.

 Dyslexia: **01623 900 610**

 Hearing Impaired: **01623 900 611**

 Physical Disability: **01623 900 612**


 Visual Impairment: **01623 900 613**

 EBD: **01623 900 614**

 **theinclusionsservice@wnc.ac.uk**



Careers and Employability Team

Advice and guidance on careers, CV writing and interview preparation.

 **01623 413 325**
 **careers@wnc.ac.uk**



Safeguarding Team

Here to help students feel safe during their time at college. For **any** concerns – speak to the team.

 **01623 900 950**
 **safeguarding@wnc.ac.uk**


Student Finance Team

Financial advice and support for students.

 **01623 900 455**
 **studentfinance@wnc.ac.uk**



Student Welfare Team

This team consists of support, attendance and behaviour coaches, mental health co-ordinators, The Wellbeing Centre and student financial support.

 **01623 627 191**
 **wellbeingcentre@wnc.ac.uk**

Work Placements

Support and information for students taking work placements.

 **01623 900 616**
 **workplacement@wnc.ac.uk**

GUIDED CAMPUS TOURS

TAKE A LOOK AT YOUR FUTURE

Our guided campus tours give you the opportunity to take a look at our fantastic facilities across all four sites.



wnc.ac.uk/tour

WHAT OUR STUDENTS SAY

“My placement really helped to develop my skills and confidence. This time last year I was a totally different person.”

Amy Mallison

Health and Social Care



“The wide range of options allowed me to explore my passion and discover my true potential. Their exceptional computer science department equipped me with the necessary skills and knowledge for my future studies and career as a games developer.”

James Thompson

Digital, Computer Science and IT

“The staff are so friendly and treat you as adults. West Notts is basically my second home and the teachers I have had on this course have made it a fun and enjoyable first year and I can't wait to start the next!”

Megan Perkins

Sports



“At my old school, I felt stagnant and unhappy with no academic or personal progress. Joining West Notts changed everything. From the first term, I experienced a shift. This newfound drive helped me choose my future career path.”

Callum Jarvis

Uniformed Protective Services



“College provided me with the opportunity to join a course that allowed me to explore various options within the construction industry.”

Jess Beniston

Construction and Building Services

“At college I've really had the push I needed to find my passion and it taught me that no matter how hard things get, you just have to push through to get where you need to be.”

Ben Perrin

Hospitality and Catering



YOUR STUDY PROGRAMME

QUALIFICATION

ENGLISH AND MATHS

In today's working environment, it's essential that you have at least a grade 4 in GCSE English and maths. If you didn't achieve this at school, don't worry, you can continue studying these key qualifications alongside your course.

WORK PLACEMENT

It's mandatory to undertake a work placement at an employer relevant to your course.

Level 2/Level 3 vocational course – 35 hours (over 1 year).

T Level course – 315 hours (over 2 years).

ENRICHMENT ACTIVITIES

All of the enrichment activities have been designed to enhance your experience, while also helping to develop key skills including confidence, teamwork and communication. It's these kind of opportunities which look great on your CV or UCAS applications.



WORK PLACEMENT

Employers regularly tell us that for students to be 'work-ready' it is important for them to have some degree of work experience.

The college runs a successful work experience programme where students undertake work placements with employers that are meaningful for their career aspirations.

Our strong links with businesses in the local area means we've been able to provide work experience in offices, banks, schools and hospitals to name just a few.

If you are studying on a T Level qualification, you will have to complete a 45-day industry placement. Throughout summer and your first-term a dedicated work placement advisor will be on hand to support you with building links with employers so you can secure your placement.

It's never early to find out about work placements.

Visit wnc.ac.uk/work-placements

ENRICHMENT OPPORTUNITIES

Enrichment opportunities will also help you to develop communication and employability skills, increase personal confidence, and give them the chance to work in a team and use their own initiative.

These include:

- Learner Voice
- Sport clubs and activities
- Work placements
- Volunteering.

CLUBS AND SOCIETIES

If you enjoy keeping active look out for the opportunity to join our new clubs and societies held at Derby Road and our Mansfield and Ashfield Sixth Form Centre.

- Football and coaching
- Basketball
- Multi-sports
- Film club
- Science reading circle
- Creative writing
- Girl boss
- BSL for beginners and more!



Scan for more info

WORKING TOGETHER...

When you become a student at West Notts, we will guarantee to provide you with the education and support you need to make the most of your time here. In return, we expect you to adhere to certain rules, regulations and policies, and behave in a manner that promotes mutual respect.

YOUR PROMISE TO US

We expect you to:

- Turn up to class on time
- Wear appropriate safety clothing and equipment in workshops
- Wear your lanyard and ID card visibly at all times
- Hand all work in on time
- Not use bad language
- Respect others and college property
- Keep the college clean and not throw litter
- Always consider your safety and the safety of others
- Tell someone at the college if you experience any problems during your time here
- Not bring drugs or alcohol onto college premises
- Not smoke on college property
- Only use mobiles in class when your teachers says it's ok
- Listen to music through in-ear speakers or headphones only.

OUR PROMISE TO YOU

We will provide:

- A safe learning environment
- Information, advice and guidance on your health and wellbeing
- Continuous support throughout your time here
- Teachers with subject expertise
- Timely marking of your work
- Careers advice and support for your next steps after leaving us
- Modern and extensive resources specific to your course
- Up-to-date facilities and equipment
- Confidential advice and support should you need it.



SAFETY AND SAFEGUARDING

We take the safety and security of our students, staff and anyone visiting the college very seriously.

Our students regularly tell us that they feel safe and supported at the college, whether on-campus, during off-site visits or when in the workplace. We have robust and well-documented processes for keeping students safe.

If you have any concerns about your safety as a student at the college, speak to a member of staff immediately at safeguarding@wnc.ac.uk

ANTI-BULLY POLICY

The college operates a zero-tolerance policy against bullying and harassment (both on and offline).

Any student found to have engaged in this activity will be in breach of the student code of conduct, and will face appropriate disciplinary action.

If you have any worries about bullying at the college, you can speak to a member of staff or one of our student coaches, confidentially.



BRITISH VALUES

The college is a values-led organisation and as such we will actively promote values that enable our students to live and work in a multi-cultural and diverse community.

Our students are guided to not simply tolerate difference but to celebrate it in all its forms. We firmly believe that when people are enabled to be themselves they are more productive and more able to meet their own potential.

The college has five organisational values of **respect, integrity, collaboration, high expectations** and **responsibility** and these are well-embedded across the college. The college has undertaken an exercise with all teaching staff linked to the promotion of values and this work will be continued within curriculum areas with students.

GETTING TO COLLEGE

We're here to help your young person get to college using the various transport options available, whether that's by bus using the West Notts College Travel Pass, taking the train, car, bike or on foot.

By bus

The college benefits from two main bus services; Stagecoach and Trentbarton which both cover the Nottinghamshire area. Travelling by bus is generally the cheapest option for getting around especially when using the West Notts College Travel Pass.

By train

Our campus has great connections with the Robin Hood Line which runs regular trains from Nottingham to Worksop (via Mansfield). If you're planning on regularly using the train, a Railcard may save you up to a third off fares.

By bike

If you live within five miles of your campus, you could cycle to college in around 30 minutes. Our campus has secure bike storage.*

On foot

The college is accessible on foot, so if you live within a two-mile distance of your campus, you could walk there in around 30 minutes – helping you to keep fit and healthy too.

By car

While we would encourage you to choose more environmentally-friendly forms of transport, all our campuses have free on-site parking, although spaces do fill up quickly!** Don't forget, car sharing with friends/colleagues might be an ideal way to reduce the cost of fuel too.

*The college does not accept responsibility for damage or theft of any bicycles whilst left on college premises.

**Both the Adult Learning Centre and Mansfield and Ashfield Sixth Form College have limited parking onsite.

TRAVEL PASS



We have partnered with local bus operators to provide students with a flexible and great value bus travel pass.

Why get one?

**UNLIMITED
TRAVEL**



**FLEXIBLE
PAYMENTS**



GREAT VALUE



MULTI-USE



CRITERIA	COST
Studying a course for two or more days per week and in receipt of a bursary (any age)	Free (see points (1) and (2))
LEARNERS AGED 16-18	Subsidised price of £18 per month for 10 months - September to June (see point (2))
T-LEVEL STUDENTS	Free - this is to enable students to attend their mandatory placements with employers.
APPRENTICES (any age)	£38 per month - all year round.

To find out more including journey planners and FAQs, please visit wnc.ac.uk/travel-pass

* If you live within a walking distance of 2km (1.24 miles) or less from the college, you will still be able to purchase a West Notts College Travel Pass but will pay the standard price of £38 per month (irrespective of whether you qualify for a bursary). However, if there are legitimate reasons preventing you from walking to college, you may be eligible to pay the subsidised price of £18 per month. If you study at two campuses and one is more than 2km (1.24 miles) walking distance from your home, then you will pay £18 per month. These prices/rates are 2023/2024 and may change slightly for 2024/2025.



Derby Road
Mansfield
Nottinghamshire
NG18 5BH



0808 100 3626



enquiries@wnc.ac.uk



wnc.ac.uk



visionwestnotts



@westnotts



@westnottscollege



@westnottscollege