



Mansfield and Ashfield
SIXTH FORM COLLEGE

COURSE GUIDE

2024/2025



DON'T WAIT APPLY TODAY

WELCOME

From the Assistant Principal

Hello,

A warm welcome and thank you for considering Mansfield and Ashfield Sixth Form College for your next step.

We love being situated at our own campus — one of Mansfield's most historic buildings in the heart of town.

Your sixth form years are really exciting ones, and choosing a learning environment that is right for you is a very important first step. We've remodelled and updated this campus to suit the needs of our academic students, and we know it has become a place where anyone can thrive and enjoy newfound independence.

Whether your future lies in university, employment or an apprenticeship, we provide the knowledge and support to not only get you there but develop your skills as a young adult building your future.

We aim to give you the best, high-quality teaching from our teachers who all come with years of experience in their subjects as well as within their industry. We always aim high to help you to achieve success and to move on to bigger and better things.



Besides supporting your studies, we also have fantastic support on offer and a range of extra-curricular offerings which will make life at sixth form stress-free and memorable.

From helping with applying for university to enabling you to go out into the world of work, we're here for our students every step of the way.

I hope you enjoy learning about what we have to offer and decide to start this journey with us in September 2024.

Best wishes,

Jane Fishwick
Assistant Principal

CONTENTS

INFORMATION

REASONS TO CHOOSE SIXTH FORM	4
MAKING THE MOST OF LIFE AT SIXTH FORM	6
LEARNER VOICE	12
OUR FACILITIES	14
GETTING TO COLLEGE	16
HELPING YOU TO SUCCEED	18
UNDERSTANDING A LEVELS	22
A LEVEL COMBINATIONS	24
A LEVEL COURSES	26
EXTENDED PROJECT QUALIFICATION	39
THE FUTURE IS BRIGHT	40
MAKE YOUR FUTURE HAPPEN OPEN EVENTS AND CAMPUS TOURS	42

COURSES

ART AND PHOTOGRAPHY	26
BIOLOGY	27
BUSINESS STUDIES	27
CHEMISTRY	28
COMPUTER SCIENCE	28
CRIMINOLOGY (VOCATIONAL)	29
ECONOMICS	29
ENGLISH LANGUAGE	30
ENGLISH LITERATURE	30
ENVIRONMENTAL SCIENCE	31
FILM STUDIES	31
FURTHER MATHS	32
GEOGRAPHY	32
HISTORY	33
LAW	33
MATHS	34
MEDIA	34
PHILOSOPHY	35
PHYSICS	35
POLITICS	36
PSYCHOLOGY	36
SOCIOLOGY	37
SPORT AND EXERCISE SCIENCE (VOCATIONAL)	37
APPLIED SCIENCE WITH FORENSICS (BTEC)	38

REASONS TO CHOOSE SIXTH FORM

1

CHOICE OF MORE THAN 20 DIFFERENT SUBJECTS

Whether you enjoy being creative or like solving tricky equations, you can find the right options for you here at sixth form. You can even consider studying one vocational subject alongside two traditional A Levels.

2

OUR STUDENTS SUCCEED

Our teachers excel in enabling you to achieve your very best and secure those important high grades.

3

SUPPORT TO GET YOU INTO TOP-TIER UNIVERSITIES

Our achievement coaches and careers team work closely with universities and The Access Project to provide support to students who aspire to attend Russell Group universities across the country.

4

ENJOY YOUR INDEPENDENCE

No more uniforms, speak to your teachers on a first-name basis and have the freedom to manage your own studies.

5

BASED IN THE HEART OF MANSFIELD

With easy access to town and local facilities, you can enjoy the best experience right on your doorstep.

6

ACCESS TO GREAT FACILITIES

You will be provided with your own laptop and locker to use throughout your studies, plus you'll have access to all the great facilities at our Derby Road campus.

7

STUDENTS RECEIVE ALL-ROUND SUPPORT

From careers advisors, achievement coaches and the wellbeing team, we are here to support you through anything.



“College life was really good. The teachers were so helpful and helped me to become more independent. I liked being at the Chesterfield Road campus as it was close to the town centre and it was great to have our own dedicated campus.”

“It’s very important to plan your studies, so you stay on top of your assignments. You’ll learn to become more independent which helps you to focus.”

Emily Speed

Now studying at the Queen Mary’s University in London

MAKING THE MOST OF LIFE AT SIXTH FORM

Choosing to come to sixth form isn't just about studying; it's a new lifestyle. Beyond the classroom, there is a world of opportunities that will shape your future and your development as a young adult.

JOIN THE OSCA SOCIETY

Planning to apply for a top-tier university such as Oxford, Cambridge, Durham or Edinburgh? Then make sure you sign up to join our Oxbridge Scholars Collegiate Associates (OSCA) society.

Through this society, you'll be taught professional etiquette using the most current academic theories which will help you to present and communicate your work in a more polished and confident manner. It will touch on the art of polite conversation, interview techniques, boardroom skills and how to excel in a debate.

You will also learn how to write with skill and precision when venturing into the professional world, as well as how to understand the range of language used in different elite institutions, sharing the skills you need to pass various entrance exams and how to prepare for, and succeed in an interview.

Members will also benefit from having the chance to attend talks by guest speakers from elite universities and industry specialists, and enjoy regular trips to the theatre and breaks away in a range of cities and locations.

The membership is limited to 20 places, so if you're interested, make sure you get your application in as soon as you start with us.

LEARNING BEYOND THE CLASSROOM

"The college always offers us great opportunities for extra-curricular learning, and offers us many trips and experiences that are both interesting and applicable to our course."

Kady Weedop

"Besides helping us to see literature on a wider scale and in real-life situations, the trips also give some faith to those of us who wish to delve into more creative endeavors."

Flynn Ledger



OXBRIDGE MEDICINE AND LAW SOCIETIES

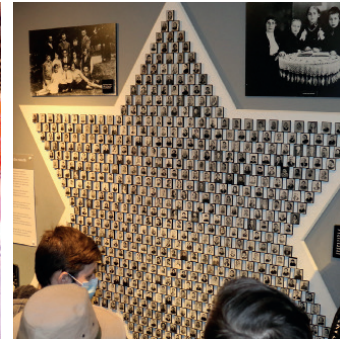
Meet students already enjoying university.



UNIVERSITY VISITS

You'll have the chance to visit some of the country's top universities and see what life on campus is like.

7



DAY TRIPS AND VISITS

Jaguar Land Rover, Harry Potter Studio Tour, Sheffield Book Festival, Lace Market Theatre, Stratford, The Holocaust Memorial Centre, Freud Museum in London, European Court of Human Rights, Strasbourg; the world is your oyster!

SPECIAL GUEST SPEAKERS

With great links to both industry and local organisations, the college will also provide you with the chance to attend guest talks from an array of exciting speakers.

Previously, we have welcomed MP for Mansfield, Ben Bradley, to the college to take part in exclusive Q&A sessions for our politics students. This gave students the chance to ask questions on matters which they care about the most and the session provided the chance to discuss the NHS, youth violence, the environment and the local area.

Students have also invited guests to take part in a Q&A panel on topics such as education policy and local generation.

We also have a range of speakers that come to college to support subject specific content such as visiting professors from Sheffield Hallam University to teach about topical sociological issues.

CONSERVATION CONSCIOUS

Are you passionate about the planet? If you are, look out for our projects with Friends of the Earth, a national environmental campaigning community.

Previously, students have had the opportunity to take part in the 'My World, My Home' project, which brought to life discussions around important topics such as the effects of fracking. They also had the chance to help run a major new tree-planting project on the college fields. For 2023 and beyond, there are lots more exciting projects planned!



ENRICHMENT CLUBS/ACTIVITIES

With a wide-range of enrichment clubs and activities available, there is plenty to get involved with:

- **Debate Club** – Investigate and argue debate questions that are tailored by student’s interests and subjects.
- **PMQ’s Watch Party** – An opportunity to discuss the points made, and the impacts on society.
- **Power Walking** – Get your steps in with a walk around the local area.
- **Musical Theatre** – Expand and develop your singing and dancing skills whilst exploring exciting performing techniques.
- **Spanish Club** – Immerse yourself in the Spanish language and culture, as you learn and practice conversational phrases and find out about life in Spain and Latin America.
- **Chess Club** – Learn the concept of the classic game of chess and meet some new ‘checkmates’.
- **Qigong** – This health promoting activity will leave you feeling fit, energised and relaxed.
- **Journaling** – Unleash your artistic potential by exploring all things journaling. From art and bullet journals to glue and smash books, discover unique ways to express thoughts, emotions and feelings
- **Airsoft** – Practise teamwork and organisation in a competitive setting (half-term only).
- **Mooting Society** – Play a part in the appeal process of the courts and increase your understanding of the court system.
- **Crochet Club** – Learn the art of yarn, and craft your own stylish pieces in a fun and welcoming environment.
- **REPLAY** – Work alongside the Esport team to discover future job roles and opportunities.
- **Zumba** – Step into the groove of fitness and fun and let the rhythm move you to a healthier, happier you!
- **Photography Club** – Elevate your skills and explore your world whilst unlocking your creative potential.



VOLUNTEERING AND CHARITY

Giving up your time to do something good is not only rewarding to the people you help, but you'll also gain a huge sense of satisfaction – and it looks great on your CV or UCAS application too.

We can help you explore volunteering opportunities to gain new skills or simply make new friends.

We also host a variety of fundraising activities to raise money for local and national charities.

CLUBS AND EVENTS

We'll be organising events throughout the year for you to take part in, whether it's fundraising or just for fun.

We also have exciting plans to introduce more sport clubs, societies and extra-curricular activities, so there will be plenty to keep you busy when you're not studying.

BECOME A STUDENT AMBASSADOR

You can also become an ambassador and represent the college at events throughout the year. As a paid position, it is not only a great opportunity to earn money, but also gain valuable skills and support potential students in their transition to college.



LEARNER VOICE

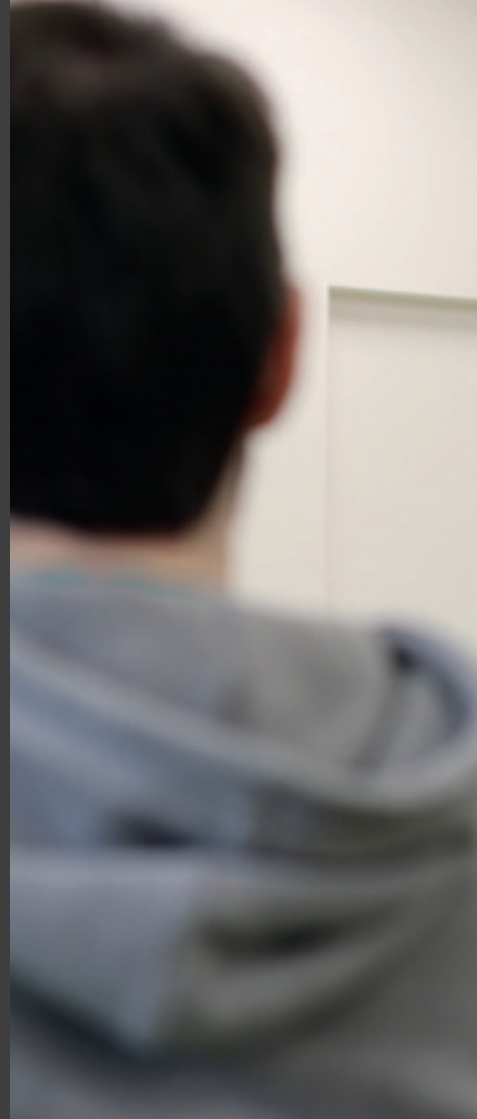
We believe in empowering students to actively contribute to a high-quality educational experience for themselves, their peers, and future students. This is known as 'Learner Voice'. It's about giving students a say in how the college operates and a greater sense of ownership over their learning journey.

To involve students, we have 'learner reps' from the sixth form college. Learner reps find out about the issues that matter to students and present these to senior staff. They play a crucial role in listening, collecting, and conveying students' perspectives to bring about positive changes.

If selected as a voluntary learner rep, you will meet with your head of department and fellow reps to provide feedback on various issues at both course and college level. You will also have a chance to participate in termly 'Your Voice' meetings, where reps from all departments gather together virtually to share ideas, ask questions and express their thoughts on the student experience to the executive team.

Learner reps can also aspire to become 'lead learner rep' for their department and join a student panel that meets with the principal and governors once per term to give feedback at the highest level.

These roles offer you the opportunity to be the voice of your class, make a positive impact on the college, and gain valuable personal and employability skills. Not only will this enhance your CV, it will also strengthen your university and job applications.





LIVE YOUR BEST LIFE FOR LESS WITH TOTUM

As soon as you have enrolled at college, you can apply for a **free** TOTUM Student membership. It gives you access to over 400 discounts, deals and offers on big-name brands both online and in store, giving you big savings on eating out, tech, fashion, travel and more!

For only £14.99 per year, you can upgrade to the TOTUM Student+ membership with access to more exclusive offers such as 10% off each shop at Co-Op and a free tastecard which offers 2 for 1 meals in some of your favourite restaurants nationwide.

Find out more [totum.com](https://www.totum.com)

OUR FACILITIES

Our dedicated sixth form centre features fully-equipped classrooms, science labs, an IT suite, a learning resource centre and plenty of space for group project work and socialising.

To help you continue learning outside of the classroom, you will be provided with your own laptop to use throughout your time here with us. You will also have a dedicated locker where you can safely store all your books and belongings when they aren't needed.

And don't forget, **you're part of the West Nottinghamshire College family**, so you can take full advantage of all the services available at the Derby Road campus.

Revive is our professional hair and beauty salon which offers exclusive discounted rates for students on a range of treatments, including facials, massages, hair styling, gel nails and more. Our award-winning Refined restaurant is also a place you must visit; offering great value for money and fun themed evenings that serve up cuisines from around the world.

 [@refined_mansfield](#)

 [@revivehairandbeautysalon](#)





TAKE A LOOK AT YOUR FUTURE

Our guided campus tour will give you the opportunity to take a look at our fantastic facilities.



GETTING TO COLLEGE

We're here to help you get to college using the various transport options available, whether that's by bus using the **West Notts College Travel Pass**, taking the train, car, bike or on foot.

BY BUS

The college benefits from two main bus services; Stagecoach and Trentbarton which both cover the Nottinghamshire area. Travelling by bus is generally the cheapest option for getting around especially when using the **West Notts College Travel Pass**.

BY TRAIN

Our campus has great connections with the Robin Hood Line which runs regular trains from Nottingham to Worksop (via Mansfield). If you're planning on regularly using the train, a Railcard may save you up to a third off fares.

BY BIKE

If you live within five miles of your campus, you could cycle to college in around 30 minutes. Our campus has secure bike storage.*

ON FOOT

The college is accessible on foot, so if you live within a two-mile distance of your campus, you could walk there in around 30 minutes – helping you to keep fit and healthy too.

BY CAR

While we would encourage you to choose more environmentally-friendly forms of transport, the college is in close proximity to Pay & Display car parks. Don't forget, car sharing with friends might be an ideal way to reduce the costs of fuel too.

*The college does not accept responsibility for damage or theft of any bicycles whilst left on college premises.

TRAVEL PASS

We have partnered with local bus operators to provide students with a flexible and great value bus travel pass.

WHY GET ONE?

UNLIMITED TRAVEL



GREAT VALUE



FLEXIBLE PAYMENTS



MULTI-USE



HOW MUCH DOES IT COST?

Whether it's travelling to college, a trip to catch-up with friends or visiting family, a West Notts College Travel Pass can help save you money on your bus journeys.

Sixth Form students aged 16-18 can get the Travel Pass for the subsidised price of £18 per month for 10 months (September to June).*

To find out more including journey planners and FAQs, please visit wnc.ac.uk/travel-pass or scan here



* If you live within a walking distance of 2km (1.24 miles) or less from the college, you will still be able to purchase a West Notts College Travel Pass but will pay the standard price of £38 per month (irrespective of whether you qualify for a bursary). However, if there are legitimate reasons preventing you from walking to college, you may be eligible to pay the subsidised price of £18 per month. If you study at two campuses and one is more than 2km (1.24 miles) walking distance from your home, then you will pay £18 per month. Please note the cost for 24/25 has not been confirmed, but we expect the pass to be a similar price.

HELPING YOU TO SUCCEED

We know that studying for your A Levels can be challenging and stressful at times. We want all of our students to not only maximise their potential, but also enjoy their time here. This is why we take a 360° approach to our support services.

Whether it's careers advice, support with assignments or simply someone to talk to, there is a dedicated team for you to speak to.

CAREERS AND EMPLOYABILITY TEAM

A team of fully-qualified and professional advisers who provide career development, support, and coaching, covering university options and registration, employment, gap years and degree apprenticeships as well as helping with CVs and applications.

 **01623 413325**

 **careers@wnc.ac.uk**

 **wnc.ac.uk/careers-advice**

WORK PLACEMENT TEAM

Securing a work placement is a great way to experience what your life could be like working within a specific profession.

Our work placement team is here to help research companies, secure opportunities and answer any questions.

 **01623 900 616**

 **workplacement@wnc.ac.uk**

STUDENT WELFARE TEAM

Offering a range of topical support sessions and drop-in opportunities, our dedicated welfare team is here to help with concerns such as depression, anxiety, self-harm, and support through times of stress. We also work alongside external partners such as the NHS, CAMHS, and counselling services to provide the best possible level of care that tailors to specific needs.

The service is both discrete and flexible, where you can receive impartial guidance, advice and support.

 **wellbeingcentre@wnc.ac.uk**

 **wnc.ac.uk/welfare**

THE INCLUSION SERVICE

Within the inclusion service we have five specialist teams supporting students with:

- Autistic spectrum disorder, emotional behavioural difficulties and mental health conditions
- Deaf/hearing loss
- Dyslexia and dyscalculia
- Physical disability and complex needs
- Visual impairment.

Providing a number of services to students who may need additional help during their studies, the teams work closely with students, schools, outside agencies and tutors to provide an individual support package.

Each team offers tailored support and a wide range of specialist services, including:

- Initial assessment of support needs

- A customised transition into college programme that includes personalised visits to prospective students, providing comprehensive information about our offer and expert assistance to help students become acquainted with the college layout, environment, and staff
- Specialist classroom support e.g. communication support workers, visual impairment, IT training, learning support assistants, sign language professionals and advanced learning support practitioners
- Assistive technology e.g. specialist software, specialist auditory equipment
- Specialist support for dyslexia and dyscalculia
- Assessment via normal way of working processes for exam access arrangements
- Support with personal care needs
- Advice and guidance regarding local authority transport for learners with learning difficulties and/or disabilities
- Transition and advice to support students into adulthood after leaving college.

Get in touch for a formal consultation and review of a student's Education, Health and Care Plan.

 **theinclusionservice@wnc.ac.uk**

ACHIEVEMENT COACHES

Every student at our sixth form centre will be allocated an achievement coach throughout their studies to help support them through their learning journey.

What will an achievement coach help me with?

The role of an achievement coach is very much a holistic one. The team works with you to help get that positive mind-set and get you really motivated towards your work. We all experience those peaks and troughs of motivation, so the coaches are here help you during those down times to keep you on-track. They really want to help to push you to the levels that you are truly capable of throughout your studies.

When will I see my coach?

Your coach will aim to meet with you every six weeks where possible, to support your progress and guide you through your academic pursuits, as well

as looking at helping you to progress to university, employment or apprenticeships. They will offer two hours of group tutorials per week where they cover many different aspects related to real life and social development.

You can meet with your coach as often as you need, at any stage and book in with them for additional support. The one-to-one tutorials are mandatory and this is where things such as equality and diversity, study skills and work placement opportunities are explored. Your coach will also help you with CV writing together with advice on finance and UCAS applications.

What else can my coach do for me?

There is a lot to cover throughout your time as an A Level student, not just assignments and exams, but you will be developing all kinds of other skills and juggling a very busy schedule. We want to help you achieve the very best that you can during your time at college and our achievement coaches are trained

to be able to provide that support to help you to keep on target and help your motivation towards those all-important studies and assignments.

They're all trained to get students on the road to success and just be there for that extra help. Coaches want to provide you with that additional boost. That might be ensuring you are getting some additional learning support on the course or guiding you through a very competitive university application.

Every single student's needs are different so they aim to listen to exactly what is needed and move forward with you in that way.



Julie



Amy



Bradley



Clare



Amy



Jay



Verity

UNDERSTANDING A LEVELS

HOW MANY SUBJECTS CAN I STUDY?

Across two years, you will either study three traditional A Level courses or choose to combine two traditional A Level courses with a vocational option. In some circumstances, you may be allowed to study four traditional A Level courses.

ENTRY REQUIREMENTS

You must have a minimum of five GCSEs graded 4 or above, including English language and maths. It's important to note that certain courses may have additional entry requirements, so please visit the website for full up-to-date details. If you're unsure about achieving the required grades, don't hesitate to reach out to us. There are alternative pathways available to support you in reaching your desired goals.



WHAT ARE MY OPTIONS?

We currently offer lots of different options, including:

- Art and Photography
- Biology
- Business Studies
- Chemistry
- Computer Science
- Criminology (vocational)
- Economics
- English Language
- English Literature
- Environmental Science
- Film Studies
- Further Maths
- Geography
- History
- Law
- Maths
- Media
- Philosophy
- Physics
- Politics
- Psychology
- Sociology
- Sport and Exercise Science (vocational)

Also available: Applied Science and Forensics (BTEC)

WHAT ARE VOCATIONAL COURSES?

For some careers, you may want to consider swapping one of your three traditional A Level courses for a vocational course. This can be a great way to develop specialised skills and knowledge that supports you in achieving your future career goals. Vocational qualifications involve a greater proportion of assessments via coursework rather than exams. You will also undertake hands-on learning to boost your employability skills and broaden future career opportunities.

We offer two vocational options:

- Criminology
- Sport and Exercise Science

THE BENEFITS

- Learn with fantastic industry-standard facilities
- Start to specialise in industry-focused skills
- Underpin your theoretical learning with practical experience
- Meet more students across different subjects
- Gain more confidence in your chosen field.

A LEVEL COMBINATIONS

To help you with choosing your options, take a look at the lists below which gives you an outline of which subjects mix well together.

ART AND PHOTOGRAPHY

English Language
English Literature
Film Studies
Media

BIOLOGY

Chemistry
Environmental Science
Further Maths
Maths
Physics
Psychology
Sport and Exercise Science

BUSINESS STUDIES

Computer Science
Economics
English Language
Film Studies
Law
Maths
Media
Politics
Psychology
Sociology

CHEMISTRY

Biology
Computer Science
Environmental Science
Further Maths
Maths
Physics

COMPUTER SCIENCE

Business
Chemistry
Further Maths
Maths
Media
Physics

CRIMINOLOGY

Business Studies
Geography
Psychology
Sociology

ECONOMICS

Business Studies
Law
Maths
Politics
Psychology
Sociology

ENGLISH LANGUAGE

English Literature
Film Studies
Media
History
Law
Politics
Sociology

ENGLISH LITERATURE

English Literature
Film Studies
History
Law
Media
Politics
Sociology

ENVIRONMENTAL SCIENCE

Biology
Chemistry
Geography
Maths
Physics



**SCAN TO FIND OUT MORE
ABOUT OUR COURSES**

FILM STUDIES

Computer Science
English Literature
Media
Psychology
Sociology

FURTHER MATHS

Biology
Business Studies
Chemistry
Computer Science
Maths
Physics
Psychology

GEOGRAPHY

Business Studies
Criminology
Environmental Science
Law
Maths
Politics
Sociology

HISTORY

Criminology
English Language
English Literature
Geography
Law
Politics
Sociology

LAW

English Language
English Literature
Geography
History
Philosophy
Politics
Sociology

MATHS

Biology
Business Studies
Chemistry
Computer Science
Economics
Environmental Science
Further Maths
Physics
Psychology

MEDIA

Art and Photography
Computer Science
English Literature
Film Studies
Psychology
Sociology

PHILOSOPHY

Law
Politics
Psychology
Sociology

PHYSICS

Biology
Chemistry
Computer Science
Environmental Science
Further Maths
Maths

POLITICS

Business Studies
Criminology
Economics
English Language
English Literature
Geography
History
Law

PSYCHOLOGY

Biology
Business Studies
Criminology
Economics
Film Studies
Further Maths
Media
Philosophy
Sociology
Sport and Exercise Science

SOCIOLOGY

Business Studies
Criminology
Economics
English Language
English Literature
Film Studies
Geography
History
Law
Media
Philosophy
Psychology

SPORT AND EXERCISE SCIENCE

Biology
Business Studies
Chemistry
Psychology

Still not sure about which subjects to choose?

You can ask for advice by emailing the team directly at



alevelenquiries@wnc.ac.uk

COURSES

Offering a range of traditional and vocational courses, there are plenty of options for you to choose from and they all support you in taking the next steps towards your chosen future.

Take a look at the information provided and if you're ready to apply, visit our website. If you're unsure about which options are best for you, get in touch and we can offer you advice and support.



0808 100 3626



alevelenquiries@wnc.ac.uk



wnc.ac.uk/a-levels



ART AND PHOTOGRAPHY

WHAT WILL I STUDY?

An A Level in art and photography is designed for developing your style and talent while learning a range of fine art and photographic techniques and approaches.

It will allow you the opportunity to develop your creative skills while learning new techniques and approaches within photography, and art and design. You will be introduced to a variety of experiences in the areas of fine art and photography that explore a range of two-dimensional and/or three-dimensional media, processes and techniques. You will also explore both traditional and new media.

ENTRY REQUIREMENTS

- English Language (grade 4)
- Maths (grade 4)
- An art-related subject (grade 5)
- Plus, two other GCSEs at grade 4.

WHERE CAN IT LEAD TO?

Further study at university-level in photography, fine art or a related subject.

Careers are often pursued as an art officer, artist, art director, animator, architect and more.



BIOLOGY

WHAT WILL I STUDY?

Understanding biology is crucial for comprehending the functioning of our bodies, from organs to cells and genes. It also sheds light on the evolution and interactions of Earth's diverse organisms. Biologists contribute significantly to society by creating vaccines, enhancing healthcare, addressing species loss via conservation, and aiding in forensic investigations. This course offers comprehensive insight into biological molecules, cells, human physiology, evolution, genetic technology, and more. Additionally, it hones practical laboratory skills, precision in performing experiments, and proficiency in statistical analysis.

ENTRY REQUIREMENTS

- English Language (grade 4)
- Maths (grade 5)
- Double Science (grade 6/5) or Biology (grade 6)
- Plus, at least grade 4 in other subjects to have a total of 5 GCSEs.

WHERE CAN IT LEAD TO?

Further study at university-level in biomedical sciences, dentistry, environmental sciences, pharmacy, sports science and other related courses. Careers are often pursued in medicine, pharmaceuticals, sports science, marine biology, nature conversation and more.



BUSINESS STUDIES

WHAT WILL I STUDY?

Having an understanding of business is becoming increasingly important in a fast-paced, technological world.

This course will provide the grounding needed to cope with today's business environments. You will focus on the issues involved in a business start-up and look at how established businesses can improve effectiveness. You will also use mathematical skills to interpret quantitative data.

ENTRY REQUIREMENTS

- English Language (grade 4)
- Maths (grade 4)
- Plus, three other GCSEs at grade 4.

WHERE CAN IT LEAD TO?

Further study at university-level in a range of subject areas including economics, management and enterprise, accountancy, project management, law-related degrees and finance-related degrees.

Careers are often pursued as an accountant, analyst, advertising media buyer, business advisor, franchise owner, marketing professional and more.

INTERESTED IN ACCOUNTING?

We are considering offering an Accounting course for September 2024, provided that we receive enough interest. If this is an opportunity that appeals to you, please get in touch alevelenquiries@wnc.ac.uk.



CHEMISTRY

WHAT WILL I STUDY?

Chemistry plays an important role in the modern world and has a huge impact on our lives. Chemists are involved in a diverse range of careers from developing medicines to analytical roles in industry or healthcare.

During this course you will build and develop your knowledge of many chemical principles including reacting amounts, structures, bonding, energetics, equilibria and organic chemistry. The course is delivered through a combination of practical work, interactive lessons and independent study.

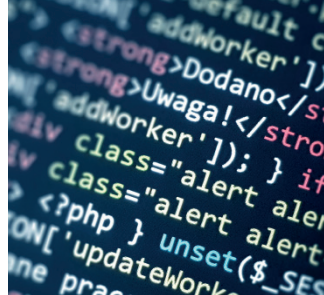
ENTRY REQUIREMENTS

- English Language (grade 4)
- Maths (grade 6)
- Double Science (grade 6/6) or Chemistry (grade 6) or Triple Science (grade 6/5/5)
- Plus, one or two other GCSEs at grade 4 if you only have GCSEs in Chemistry or Double Science.

WHERE CAN IT LEAD TO?

Further study at university-level in a range of chemistry-related courses, including medicine, dentistry, pharmacy, veterinary science, chemical engineering and many biological science degrees.

Careers are often pursued as a chemical scientist, medical practitioner, radiographer, veterinary nurse, nurse, physiotherapist, biochemist and many more.



COMPUTER SCIENCE

WHAT WILL I STUDY?

On this course, you will learn the technical aspects of computer science. With an emphasis on programming, abstract thinking, general problem solving, algorithmic and mathematical reasoning, and the inner workings of computer technologies, you will gain a wide range of skills that support you pursuing various career paths.

We highly recommend also selecting A Level Maths as it complements the subject matter.

ENTRY REQUIREMENTS

- English Language (grade 4)
- A maths-based subject (grade 6)
- Plus three other GCSEs at grade 4.

WHERE CAN IT LEAD TO?

This programme can lead to university study with degrees in computer science, games programming, artificial intelligence, cyber security and many other areas. You can also progress onto an apprenticeship in digital marketing, cyber security and infrastructure technician.

Careers are often pursued as a software developer, hardware and networking technician, games technologist and digital marketer.



CRIMINOLOGY (VOCATIONAL)

WHAT WILL I STUDY?

Covering the complex behaviours and implications of criminality, law, science, psychology of crime and sociology, our criminology course is a fascinating first step into many popular careers.

Over the two years, you will study four units that focus on who commits crimes and what types, theories to explain serious crimes, the process of taking a crime from the crime scene to the courtroom and the punishment and criminal justice system of England.

ENTRY REQUIREMENTS

- English Language (grade 4)
- Maths (grade 4)
- Double Science (grade 4/4) or Triple Science (grade 4/4/4)
- Plus, one other GCSE at grade 4 if you only have GCSEs in Double Science.

WHERE CAN IT LEAD TO?

Further study at university-level in criminology, law, psychology, sociology or a combination of these areas and many more.

Careers are often pursued in courts and tribunal service, probation and offender management, law, crime scene investigation, psychology and counselling, social work and intelligence services.



ECONOMICS

WHAT WILL I STUDY?

This thought-provoking course offers the opportunity to learn about the latest economic theories and practices in the context of different economic issues both nationally and internationally.

This course is broadly divided into two sections: micro-economics, which studies the various parts of the economy and macro-economics, which focuses on the national and international economy. You will develop the knowledge and skills needed to understand and analyse data, think critically about issues and make informed decisions.

ENTRY REQUIREMENTS

- English Language (grade 4)
- Maths (grade 6)
- Plus, three other GCSEs at grade 4.

WHERE CAN IT LEAD TO?

Further study at university-level in a range of courses including business, accounting and finance, marketing, journalism, politics, law and history.

Careers are often pursued as a professional economist, lawyer, chartered accountant, marketing professional, politician, journalist, stockbroker, data analyst and many more.

INTERESTED IN ACCOUNTING?

We are considering offering an Accounting course for September 2024, provided that we receive enough interest. If this is an opportunity that appeals to you, please get in touch alevelenquiries@wnc.ac.uk.



ENGLISH LANGUAGE

WHAT WILL I STUDY?

In this course, you will learn about both the past and present of the English language.

You will be encouraged to explore how we use it to communicate through a wide variety of spoken and written texts; analysing the different variations of the English Language, developing your understanding and appreciation of English in all contexts. You will also develop your own writing skills in relation to genre, purpose and audience.

ENTRY REQUIREMENTS

- English Language (grade 4)
- English Literature (grade 4)
- Plus, three other GCSEs at grade 4.

If you have only studied English Literature and not Language, you will need to discuss this with the subject tutor.

WHERE CAN IT LEAD TO?

Further study at university-level in the subject, as well as linguistics, creative writing, history, politics, media, communications and journalism.

Careers are often pursued as a journalist, author, editor, teacher, solicitor, public relations professional and more.



ENGLISH LITERATURE

WHAT WILL I STUDY?

On this course, you will develop your interest and enjoyment of the written word. This includes gaining an understanding of the traditions of literature, making informed opinions and judgements on literary texts, and developing your knowledge of cultural and historical influences on texts.

By reading widely, and critically, across centuries, genders and genres, you will develop as an independent reader and critic.

ENTRY REQUIREMENTS

- English Language (grade 4)
- English Literature (grade 4)
- Plus, three other GCSEs at grade 4.

If you have only studied English Language and not Literature, you will need to discuss this with the subject teacher.

WHERE CAN IT LEAD TO?

Further study at university-level in the subject or creative writing, history, politics, media and communications.

Careers are often pursued as a teacher, marketing professional, public relations officer, librarian, author, translator, solicitor and more.



ENVIRONMENTAL SCIENCE

WHAT WILL I STUDY?

Studying the natural environment has never been more important and relevant than today.

On this course you will learn about the conservation of diverse species and habitats around the world. You will also look at the composition of the atmosphere, nutrient cycles and the soil, methods of energy generation and climate change. You will also learn about the different types of pollution and how we can reduce them, sustainable agriculture and fisheries, forestry and deforestation, recycling and sustainability.

ENTRY REQUIREMENTS

- English Language (grade 4)
- Maths (grade 5)
- Double Science (grade 5/6) or Triple Science (grade 6/5/5)
- Plus, one other GCSE at grade 4 if you only have GCSEs in Double Science.

WHERE CAN IT LEAD TO?

Further study at university-level in a range of courses including environmental science, geography, marine biology and geology.

Careers are often pursued as an environmental scientist, marine biologist, town planner, environmental analyst, scientific adviser and many more.



FILM STUDIES

WHAT WILL I STUDY?

Film is a dominant art form, both reflecting and influencing society and culture.

This A Level will give you a broader knowledge of film, exploring it over a range of time periods and movements including silent cinema, Hollywood, British film, American film, global films, documentary films and experimental films.

Learning to read films as more than a form of entertainment will develop your skills in analysis and interpretation. You will also have the opportunity to work on a practical film project of your own.

ENTRY REQUIREMENTS

- English Language (grade 4)
- Maths (grade 4)
- A humanities-based subject (grade 4)
- Plus, three other GCSEs at grade 4.

WHERE CAN IT LEAD TO?

Further study at university-level in cultural studies, creative writing, film and television studies.

Careers are often pursued as a TV production assistant, video editor, film producer, production manager and more.



FURTHER MATHS

WHAT WILL I STUDY?

This course is for those who are exceptionally talented mathematicians and have excelled at maths at GCSE.

You will cover a range of advanced and theoretical topics including complex numbers, matrices, mathematical argument, language and proof, modelling and problem solving.

ENTRY REQUIREMENTS

- Maths (grade 7)
- English Language (grade 4)
- Plus, at least three other GCSEs at grade 4 or above.

You must also choose to study A Level Maths.

WHERE CAN IT LEAD TO?

Further study at university-level in the subject or a maths-related degree such as engineering or physics.

Careers are often pursued as an aeronautical engineer, biochemist, veterinarian, chemical engineer and more.



GEOGRAPHY

WHAT WILL I STUDY?

With climate change and environmental issues high on many people's agendas, geography remains an important topic of study.

This course will encourage you to look at the physical nature of the planet and the influence human activity has on it. You will study topics in human geographies, such as regeneration of urban and rural areas, and physical geographies, such as coastal processes, water security and energy.

ENTRY REQUIREMENTS

- English Language (grade 4)
- Maths (grade 4)
- A humanities-based subject (grade 4)
- Plus, three other GCSEs at grade 4.

WHERE CAN IT LEAD TO?

Further study at university-level in the subject or related courses such as environmental management, social policy, civil engineering, geology or science-related degrees.

Careers are often pursued as a conservation professional, teacher, civil engineer, chartered surveyor and more.



HISTORY

WHAT WILL I STUDY?

A better knowledge and understanding of the past is an excellent way to get a clearer view of today's events, which is what makes studying history so compelling.

On this course you will tackle a wide range of British, European and world history, allowing you to understand how modern society and government has been shaped by the past. You will learn how important history is in determining modern identity, culture and lifestyle.

ENTRY REQUIREMENTS

- English Language (grade 4)
- Maths (grade 4)
- A humanities-based subject (grade 4)
- Plus, two other GCSEs at grade 4.

WHERE CAN IT LEAD TO?

Further study at university-level in courses such as history, archaeology, English, politics, philosophy and economics, international studies, media and communications and journalism.

Careers are often pursued as a researcher, museum curator, government officer, author and more.



LAW

WHAT WILL I STUDY?

A strong legal system is the foundation of an ordered, fair and democratic society. From prosecuting and punishing offenders for offences committed to providing appropriate methods of remedying civil disputes between individuals and organisations, our legal system is a complex, ever-changing cornerstone of government.

Covering an exciting range of topics, this course will develop your legal knowledge and critical thinking skills. It will teach you the essential skills needed to pursue further studying in related areas and provide a great first step to a career in law.

ENTRY REQUIREMENTS

- English Language (grade 4)
- Maths (grade 4)
- A humanities-based subject (grade 4)
- Plus, two other GCSEs at grade 4.

WHERE CAN IT LEAD TO?

Further study at university-level to become a barrister or solicitor. It can also create a good foundation for a Degree or Vocational Certificate/Diploma in Law and Practice with CILEX.

Careers are often pursued as a solicitor, barrister, judge, senior police officer, probation officer and more.



MATHS

WHAT WILL I STUDY?

A Level maths builds on and extends GCSE knowledge and skills whilst also introducing new ideas, such as calculus and its applications. It emphasises how mathematical ideas are interconnected and how these ideas can be applied to model situations.

On the course, there is a strong emphasis on logical reasoning and problem-solving, so you will also learn to use your mathematical skills and techniques to solve challenging problems.

ENTRY REQUIREMENTS

- English Language (grade 4)
- Maths (grade 6)
- Plus, three other GCSEs at grade 4.

WHERE CAN IT LEAD TO?

Further study at university-level in maths, business, accountancy, science, computing, engineering or economics.

Careers are often pursued as a financial advisor, chartered accountant, finance officers, bank and post office clerk, finance and investment analyst and more.



MEDIA

WHAT WILL I STUDY?

On this course, you will be taught how to analyse the various forms of media language and representations that we consume every day; developing the ability to deconstruct a variety of texts.

This A Level will give you a broader knowledge of media focusing on set texts including newspapers, advertising and marketing, film, music video, radio, video games, magazines, television and online, social and participatory media. You will also undertake a creative project, applying the skills you have learned to research and create your own media products.

ENTRY REQUIREMENTS

- English Language (grade 4)
- Maths (grade 4)
- Plus, three other GCSEs at grade 4.

WHERE CAN IT LEAD TO?

Further study at university-level in communications and media-related subjects such as journalism, TV production and broadcasting.

Careers are often pursued as a public relations officer, photographer, journalist, editor, art officer, broadcaster, marketing professional and more.

NEW
FOR 2024



PHILOSOPHY

WHAT WILL I STUDY?

A Level Philosophy is designed to give you a thorough grounding in the key concepts and methods of philosophy. You will have the opportunity to engage with big questions in a purely secular context.

You will develop important skills that you need for progression to higher education. You will learn to be clear and precise in your thinking and writing. You will engage with complex texts, analysing and evaluating the arguments of others and constructing and defending your own arguments.

ENTRY REQUIREMENTS

- English Language (grade 4)
- Maths (grade 4)
- Plus three other GCSEs at grade 4 (one of which should be Religious Studies, History, Geography, English Literature or Law).

WHERE CAN IT LEAD TO?

A Level Philosophy sharpens your skills of analysis and your ability to construct solid arguments.

These transferable skills make it ideal preparation for most academic university courses, in particular law, politics and the social sciences.



PHYSICS

WHAT WILL I STUDY?

Physics is a fundamental science subject and the key to understanding the world around us and the world beyond us. It is the study of matter, energy, force and motion, which can challenge our imagination and lead to world-changing discoveries such as lasers and computers.

As an A Level physics student, you can expect to learn valuable, transferable skills such as problem solving and analysis.

Alternatively, consider our Level 3 full-time Applied Science with Forensics course! See page 38 for more details.

ENTRY REQUIREMENTS

- English Language (grade 4)
- Maths (grade 6)
- Double Science (grade 6/6) or Physics (grade 6) or Triple Science (grade 6/6/5)
- Plus, one or two other GCSEs at grade 4 if you only have GCSEs in Physics or Double Science.

WHERE CAN IT LEAD TO?

Further study at university-level in a range of courses including astronomy, engineering, medicine and information technology.

Careers are often pursued as an engineering technician, physical scientist, civil engineer, architect and more.



POLITICS

WHAT WILL I STUDY?

Covering news and current affairs from both the UK and the USA, this course looks at the historical and controversial nature of politics within the world in which we live.

Over the course of two years, you will sit three core papers that focus on UK politics and democracy, the UK Government, and the different types of politics in the UK and USA.

If you enjoy learning about politics and the people in power, this course could be perfect for you.

ENTRY REQUIREMENTS

- English Language (grade 4)
- Maths (grade 4)
- A humanities-based subject (grade 4)
- Plus, two other GCSEs at grade 4.

WHERE CAN IT LEAD TO?

Further study at university-level in politics, philosophy, economics, law, journalism and many more.

Careers in government, civil service, the United Nations, law, intelligence, mediation and negotiation and more.



PSYCHOLOGY

WHAT WILL I STUDY?

Do you ever wonder why people do the things they do? Or are you interested in knowing more about how the brain works?

Studying psychology will give you the skills needed to understand human behaviour, to develop an understanding of the different areas of psychology and explore topical issues.

As part of this A Level course you still also learn about cognition, child development, social psychology and individual differences.

ENTRY REQUIREMENTS

- English Language (grade 4)
- Maths (grade 4)
- Double Science (grade 4/4) or Triple Science (grade 4/4/4)
- Plus, one other GCSE at grade 4 if you only have GCSEs in Double Science.

WHERE CAN IT LEAD TO?

Further study at university-level in subjects including health studies, criminology, science and psychology.

In the future you may choose to specialise in a certain area of psychology or pursue a career as a psychologist or counsellor.



SOCIOLOGY

WHAT WILL I STUDY?

A Level sociology helps you to develop a critical understanding of society by examining the influence of institutions, such as the education system, family, belief systems and religion, and the criminal justice system.

During this course you will look at how society through social, economic and political influences shapes people but then how people, in turn, shape society. A central focus of sociology is inequality, where various inequalities between different social groups are examined.

ENTRY REQUIREMENTS

- English Language (grade 4)
- Maths (grade 4)
- A humanities-based subject (grade 4)
- Plus, two other GCSEs at grade 4.

WHERE CAN IT LEAD TO?

Further study at university-level in subjects such as social studies, psychology, law, business and politics.

Careers are often pursued as a journalist, social worker, teacher, marketing executive, police officer, HR executive and more.



SPORT AND EXERCISE SCIENCE (VOCATIONAL)

WHAT WILL I STUDY?

This course provides a broad range of studies for the sport and exercise science sector. Mandatory units include functional anatomy, sport and exercise psychology, and coaching for performance and fitness. You will study the optional unit designed to support progression to a variety of sports courses at a higher level.

ENTRY REQUIREMENTS

- English Language (grade 4)
- Maths (grade 4)
- Double Science (grade 4/4) or Triple Science (grade 4/4/4)
- Plus, two other GCSEs at grade 4.

WHERE CAN IT LEAD TO?

Further study at university-level including a degree in a biology, sport and applied sport science.

Careers are often pursued as a personal trainer, sport coach, exercise physiologist, sports therapist and more.



APPLIED SCIENCE WITH FORENSICS (BTEC)

This two-year course offers an alternative route for those passionate about pursuing science-related careers, catering to those who prefer a hands-on approach to learning over traditional A Levels. Equivalent to completing three A Level courses, it provides an opportunity to gain valuable UCAS points for progressing into university. With entry requirements set slightly lower than A Level science courses, this course adopts a more diversified set of assessment methods, allowing for a more manageable pace of learning.

WHAT WILL I STUDY?

- Forensic evidence
- Collection and analysis
- Forensic fire investigation
- Independent research project (compulsory).

ENTRY REQUIREMENTS

- English Language (grade 4)
- Maths (grade 4)
- Double Science (grade 4/4) or Triple Science (grade 4/4/4). If you have 4/4 in double Science, you will also need one other GCSE at grade 4.



EXTENDED PROJECT QUALIFICATION

During your second year (Year 13), you will have the opportunity to study the Extended Project Qualification (EPQ) in addition to your A Levels. The EPQ is a one-year course that involves undertaking an individual research project based on your personal choice. This course not only offers extra UCAS points but also enables you to delve into a subject that may not be available as an A Level option. It allows you to obtain a qualification while exploring your own passions and interests.

CHOOSE YOUR PROJECT

The project itself can take various forms, such as written reports, performances, community projects, films, and more. Once you have completed your project, you will have the chance to deliver a presentation to the staff, students, and industry visitors, showcasing your findings and achievements.

Examples of EPQ projects from previous years include:

- How far did radical thinkers and writers, including those of the Enlightenment, cause or influence the first French Revolution?
- To what extent do you agree with the statement 'Rhetoric is the use of words by human agents to form attitudes or to induce actions in other human agents' concerning religious discourse?
- Investigating into performance enhancing drugs in Premier League football.
- Why is Chernobyl the worst nuclear disaster in history?
- To what extent will Bitcoin be used in the future?
- Should the UK reintroduce capital punishment?

THE FUTURE IS BRIGHT

UNIVERSITY OF NOTTINGHAM
(HISTORY, PHARMACY)

DURHAM UNIVERSITY
(PSYCHOLOGY, JAPANESE STUDIES)

BISHOP GROSSETESTE
UNIVERSITY
(PRIMARY EDUCATION)

UNIVERSITY OF EDINBURGH
(LAW)

UNIVERSITY OF YORK
(ENGLISH, MATHS, ECONOMICS)

DE MONTFORT UNIVERSITY
(BIOMEDICAL SCIENCE,
PSYCHOLOGY)

UNIVERSITY OF BRISTOL
(LAW)

NOTTINGHAM TRENT
UNIVERSITY
(PSYCHOLOGY WITH CRIMINOLOGY/
COUNSELLING, FORENSIC SCIENCE,
LAW, ACCOUNTANCY, NURSING
AND CREATIVE WRITING)

SHEFFIELD HALLAM
UNIVERSITY
(LAW, FILM, GEOGRAPHY, ENGLISH,
FINANCIAL TRADING, PSYCHOLOGY)

UNIVERSITY OF DERBY
(MATHS, NURSING, HISTORY,
JOURNALISM)

UNIVERSITY OF HULL
(CHEMICAL ENGINEERING, BIOLOGY,
MATHS)





UNIVERSITY OF LINCOLN
(PHARMACY, BUSINESS)

UNIVERSITY OF
WESTMINSTER, LONDON
(POLITICS AND INTERNATIONAL
RELATIONS)

STAFFORD UNIVERSITY
(AERONAUTICAL ENGINEERING)

ST ANDREWS
(ENGLISH)

LEEDS TRINITY
(BUSINESS AND CRIMINOLOGY)

SHEFFIELD HALLAM
(ENGLISH LITERATURE)



*“Every one of
my teachers has
been brilliant
throughout my
time at sixth
form.
They were
always there for
me and able
to answer any
questions about
my subjects.”*

Ryley Eyre

Now studying Chemistry at the
University of Nottingham.

MAKE YOUR FUTURE HAPPEN

A LEVEL OPEN EVENTS

If you want to find out more, come along to an open event at our Chesterfield Road campus (NG19 7BB) where you can meet our teachers, tour our campus and ask any questions.

Tuesday 21 November | 5.30 – 7.30pm

Wednesday 24 January | 5.30 – 7.30pm

CAMPUS TOURS

Once you've attended an open event, why not join us on a campus tour?

Lasting around 30 minutes, these tours give you the chance to see the facilities for specific subject areas and also common areas such as The Gallery, LRC and social spaces. Our team will also be on hand to answer any questions.

To book onto a tour visit wnc.ac.uk/tours

COLLEGE OPEN EVENTS



If you're unsure if A Levels are the best option for you, why not come along to a college open event at our Derby Road campus (NG18 5BH) where you can find out more about A Levels, T Levels, apprenticeships and vocational courses all at once. It will be the perfect opportunity to weigh up your options and decide what will work best for you.

Saturday 11 November | 10am–1pm

Thursday 22 February | 5.30–7.30pm

Saturday 15 June | 10am–1pm

Book your place today
wnc.ac.uk/events



If you have any queries about the Sixth Form, you can ask the team directly at

alevelenquiries@wnc.ac.uk

APPLY FOR YOUR PLACE

Places on our courses can fill up fast, so make sure you submit an application online and reserve yours!

If you change your mind about your options or studying A Levels, don't worry – we can help you to update your application right up until your first few weeks as a sixth form student.



STAY CONNECTED

Follow us on social media to get an insight into what life is like as a student and get the latest updates on courses, applications and much more.

 **visionwestnotts**

 **@westnotts**

 **@westnottscollege**

 **@westnottscollege**



MEET THE LEARNER ENGAGEMENT TEAM

Got a question? Want to book a tour? Unsure about your next steps? Then why not speak to our friendly learner engagement team. They're here to ensure your transition to college is easy and stress-free.

 **learner.engagement@wnc.ac.uk**

 **01623 900 990**



CONTACT US:

Chesterfield Road South
Mansfield
Nottinghamshire
NG19 7BB



0808 100 3626



alevelenquiries@wnc.ac.uk



wnc.ac.uk/a-levels



[visionwestnotts](https://www.facebook.com/visionwestnotts)



[@westnotts](https://twitter.com/westnotts)



[@westnottscollege](https://www.instagram.com/westnottscollege)



[@westnottscollege](https://www.tiktok.com/@westnottscollege)