

# ACCESS TO UNIVERSITY COURSES



GREAT  
THINGS START HERE

# WHAT IS ACCESS TO UNIVERSITY?

Access to University programmes are specifically aimed at those aged 19 and above who would like to study a university-level programme in the future but don't have the necessary qualifications.

Covering a wide range of subject areas, our courses are the perfect way to bridge the gap between your current qualifications and moving on to study at university.

What's more, we pride ourselves on providing an enjoyable learning experience where you leave us not only with new skills, but new-found confidence to pursue your new future.



# YOUR COLLEGE, YOUR FACILITIES.

Dedicated to providing a first-class learning experience, our Derby Road campus is home to a wide range of facilities that support your learning beyond the classroom:

- An LRC stocked with relevant books and journals
- Self-study areas complete with PCs
- Canteen areas
- Careers advisors
- Wellbeing officers.

You can also visit our professional restaurant and beauty salon to enjoy some of the best food in Mansfield and an array of popular beauty treatments - all for very reasonable prices.

In terms of accessibility, the campus has good parking facilities and is easily accessible by bus.



# GIVING YOU FLEXIBILITY TO MANAGE YOUR LIFE AND STUDIES.

Time, money and existing commitments are often the barriers stopping us from pursuing our goals. To ensure this is not the case for you, we offer the option to study either full or part-time so returning to education is both possible and enjoyable.



## Full-time (1 year)

To undertake the one-year course, you must have at least grade 4/C in GCSE maths and English. If you do not meet these requirements, please see the part-time section.

The full-time courses are delivered in college over two full days, usually from 9.00am-4.30pm. At certain points of the academic year and dependent on the modules you are studying, your days may be slightly shorter.

You will spend an additional half day taking part in an online lesson, but this can usually be completed at a time to suit you.

Occasionally you may be asked to attend at college to complete certain aspects of the online module, but you will be given ample notice of such occasions.



## Part-time (2 years)

If you have a grade 4/C in GCSE maths and English, you can opt to study part-time.

If you do not have the required grades, the part-time option allows you to study for these qualifications alongside your Access to University course. However, you will have to complete a maths and English assessment to ascertain your skills level before receiving an offer.

Typically, you will undertake one full day in college for your course and one half day per GCSE. If you are also studying for both GCSEs and choose to do them both in your first year with us, then you will be in college for a total of two days per week.

As well as your formal college work, you will also be expected to engage in at least 8 hours worth of self-study a week. If you are taking your GCSEs, please do factor in the self-study required for these subjects as well as your course.

Wider reading, research and self-study is required to give you the best opportunity of those higher distinction grades, which are often required by universities.

The part-time option is open to the majority of study pathways, but see pages six to nine for the full details.



# COURSE STRUCTURE.

To prepare you for the demands of higher-level study, our courses will test your skills beyond your focus topic and into a range of study methods.

This includes developing academic skills, learning how to write and reference assignments and how to develop your confidence with interviews and presentation skills.

For the course, subjects are taught in a series of graded and ungraded units, which are usually worth either three or six credits.

Each unit will contain either one or two formal assessments and these will be conducted via various methods such as essays, reports, presentations and examinations.

Every unit has to be passed in order for you to gain your Access to University Diploma.

You will of course be given guidance and taught study skills throughout in order to help you with your work and assessments.



# ACCESS TO UNIVERSITY COURSES.

We offer a variety of courses that support a wide range of careers. To help you explore your options, we have provided all the information you need to discover which course could be right for you.

## ENTRY REQUIREMENTS



### FULL-TIME COURSES

Grade 4/C in GCSE English and maths.



### PART-TIME COURSES

Grade 4/C or below in GCSE English and maths. If below, GCSEs must be retaken alongside the course.

## ACCESS TO UNIVERSITY (LAW)



### LEVEL 3 COURSE

Fusing the two related fields of law and business, this course has a broad range of progression routes and studies varied topics.

Across both mandatory and optional units, you will learn about the English legal system, contract law, marketing and more. You will also conduct an individual research project on a topic related to either business or law.

In terms of progression, this course is a great first step towards a wide range of careers, including becoming a barrister, solicitor, criminologist or work working within business and corporate management.

### Possible Related Careers

(Avg. Salary\*):

Barrister (£34K+)

Detective (£41K+)

Solicitor (£36K+)

## ACCESS TO UNIVERSITY (BUSINESS)



### LEVEL 3 COURSE

If you are looking for a first step into the corporate world, the Access to University Business course may be for you.

Fusing the two related fields of law and business, this course gives you the underpinning knowledge about organisations, marketing, law and so much more. It is an ideal course if you want to become a specialist or even run your own business one day.

### Possible Related Careers

(Avg. Salary\*):

Business sales executive (£32K+)

Business and financial project manager (£42K+)

Management consultant and business analyst (£32K+)

## ACCESS TO UNIVERSITY (SCIENCES)



### LEVEL 3 COURSE

Could you see yourself as a health professional, or perhaps working in agriculture or engineering? If so, our Access to University Sciences course is for you.

Splitting into two pathways, you can choose to focus on either biology or chemistry. Across both options, you will learn about interesting topics such as human biology, chemistry, and physics. You will also undertake many practical science projects, including an individual research project.

#### Possible Related Careers

(Avg. Salary\*):

Physiotherapist (£29K+)

Biochemist (£35K+)

Laboratory technician (£19K+)

## ACCESS TO UNIVERSITY (SOCIAL WORK)



### LEVEL 3 COURSE

As the perfect first step to a range of rewarding careers, this course explores several key areas within the social sector.

Throughout your studies, you will learn more about social policy, law, psychology and sociology. You will also undertake an individual research project in a social work-related field and develop your study skills for higher education.

To maximise your opportunities, it is highly-recommended that you also secure relevant work placement opportunities to give you additional hands-on experience.

#### Possible Related Careers

(Avg. Salary\*):

Social worker (£33K+)

Welfare professional (£31K+)

Youth and community worker (£22K+)

## ACCESS TO UNIVERSITY (SOCIAL SCIENCE)



### LEVEL 3 COURSE

Do you have a fascination with why people do what they do?

Are you interested in exploring how society works? Or, perhaps you are interested in trying your hand at forensic psychology to see if you can distinguish a serial killer from a mass murderer?

Whatever your interest and ambition, this course provides the skills and knowledge needed for a wide range of careers within the fields of sociology and psychology.

#### Possible Related Careers

(Avg. Salary\*):

Social worker (£33K+)

Psychologist (£45K+)

Criminologist (£31K+)

## ACCESS TO UNIVERSITY (HUMANITIES - ENGLISH AND HISTORY)



### LEVEL 3 COURSE

Are you intrigued by the world of politics? Maybe, you are a history buff?

Whatever your interest, this course covers a broad range of interesting topics, including English language, English literature, history and an individual research project.

Together, these modules will give you the skills and confidence to progress into a wide range of careers.

#### Possible Related Careers

(Avg. Salary\*):

Secondary teacher (£36K+)

Journalist (£31K+)

Speech therapist (£25K+)

## ACCESS TO UNIVERSITY (NURSING AND HEALTHCARE PROFESSIONS)



### LEVEL 3 COURSE

Have you always dreamt of becoming a nurse or perhaps a midwife or occupational therapist? If so, this is the ideal course for you.

Throughout the course, you will study maths, human biology, sociology and psychology. This will provide you with a good foundation for a wide range of university courses within the health and care sector, including those offered by Nottingham Trent University and can be studied on-site at our Derby Road campus.

#### Possible Related Careers

(Avg. Salary\*):

Midwife/Nurse (£30K+)

Paramedic (£40K+)

Occupational therapist (£28K+)

## ACCESS TO UNIVERSITY (TEACHER TRAINING - PRIMARY EDUCATION)



### LEVEL 3 COURSE

A career in teaching is not only rewarding, but can open up a world of opportunities.

Giving you the skills needed for further study, this course covers a wide range of topics including practical issues in teaching, language studies, literary studies, history, maths and key studies in psychology.

As part of this course, you must also arrange a work placement in a school for at least 21 days.

#### Possible Related Careers

(Avg. Salary\*):

Primary and nursery teacher (£32K+)

SEN teacher (£32K+)

FE teaching professional (£35K+)



## ACCESS TO UNIVERSITY (COMPUTING AND IT)



### LEVEL 3 COURSE

The digital sector is fast-growing and offers many exciting career opportunities.

Designed for learners who want to study towards a degree in computer science or other computing disciplines, the course covers topics such as cyber security, eCommerce, maths, database and spreadsheet design, computer networks and programming and web design.

After completing the course you will have the practical skills, knowledge and confidence to apply for a wide range of courses relating to digital technologies and computer science.

#### **Possible Related Careers**

(Avg. Salary\*):

Web developer (£34K+)

Software engineer (£37K+)

Applications developer (£40K+)

---

# PROGRESSION TO HIGHER EDUCATION

After successfully completing your Access course, you will then be looking to advance to university to pursue a Higher Education qualification.

We realise you have many choices for university, but we do work closely with the University of Derby and Nottingham Trent University, both of whom have a vast selection of Foundation Degree and full honours degrees in a variety of specialties.

Nottingham Trent University have opened a Mansfield hub, which is right next door to the college.

Visit their websites to discover what subjects you could move on to study next:

 [ntu.ac.uk](https://www.ntu.ac.uk)

 [derby.ac.uk](https://www.derby.ac.uk)



# STUDENT CASE STUDIES

After choosing to stop studying for her A Levels, Georgina later chose to return to education to pursue her goal of becoming a solicitor.

"I saw the Access to University course as an opportunity to learn in an adult environment and, most importantly, a chance to gain the qualifications required for university.

"Whilst I initially signed up for the law side of things, the business side gave me the insight of leadership roles, presentation skills and a vast amount of transferable skills that I still use today. The two go hand in hand; it was perfect.

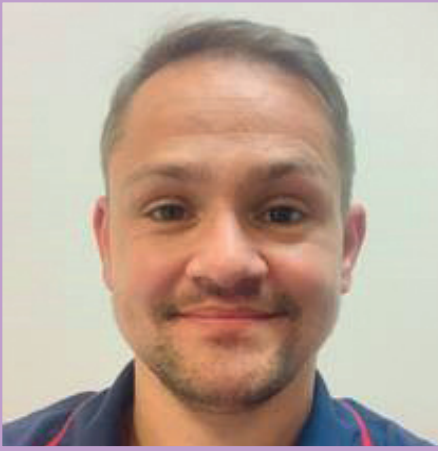
"I developed confidence within my work and I started believing in myself again. I genuinely feel I developed into the person I am today in various ways because of that course.

"I am truly grateful for not only the course, but the amazing set of tutors on it. I cannot recommend this course enough!"



**GEORGINA WRIGHT**

*"I genuinely feel I developed into the person I am today in various ways because of my course."*



ADAM STREET

*"Take the  
plunge; it will be  
well worth it."*

Looking to change careers and become a nurse, Adam studied on the Access to Nursing and Healthcare course.

"I was frustrated in the role I was in as there was no career development. I wanted to have a new and exciting challenge.

"Going back to studying was initially a shock, but thanks to the support from the tutors, I found it easier to manage studying and working a full-time job.

"Now, I am the lead nurse for the COVID Medicines Delivery Unit at Nottingham University Hospital and Sherwood Forests Hospitals NHS Foundation Trust.

"I truly believe that everyone has the ability to fulfil their dreams and potential. If I can do it then anyone can if you truly put your heart and soul into it."



SEE WHAT OUR STUDENTS  
HAVE TO SAY





## AMY CHAPPELL

Having worked as a customer services manager for many years, Amy wanted a change of career to pursue her love for English.

“To begin with I did find it hard to work and study at the same time, but with support from my family and my employer it was made possible.

“After completing the course, I went to Nottingham Trent University to study BA (hons) English and Linguistics and then completed a PGCE in Secondary English Education at The University of Nottingham.

“I’m now back at NTU studying for an MA (by research) in Linguistics as I want to do a Ph.D. in social policy, working with the widening participation departments in further education and higher education.

“I’m so glad I eventually took the opportunity and time to take the course and change my future.”

# ALUMNI

We’re passionate about keeping in touch and seeing how well you do after you complete your studies with us. To discover that our students have gone on to happy and rewarding careers makes us proud and it enables us to showcase your success to future students.

Our exciting alumni scheme is designed to not only be a wonderful way to keep in touch with the successes of our past students, but also to inspire those people considering a return to education by sharing your stories and memories.

As a member of the alumni you will be invited to a range of events running throughout the year as well as having opportunities to engage with current and future students, and you’ll be able to keep up-to-date with news and benefit from a number of incentives such as the great referral scheme.

You will also be given the valuable opportunity to really make a difference to someone else’s career goals for example by being a mentor, attending events or writing about your journey.

# FINANCE AND FUNDING

## Advanced Learner Loan

You may qualify for an Advanced Learner Loan to help pay for your course tuition fees. The scheme has been introduced by the government to help learners over the age of 19 study for qualifications at Level 3 and above, so you can improve your employability and develop high-level skills and knowledge.

To be eligible for an advanced learner loan you must:

- be aged 19 or over at the start of your course
- be studying an eligible course
- be a resident in the UK.

You won't have to pay the loan back until you are earning over £27,295 per year and it will be written off after 30 years. If at any time your earnings fall below £27,295 – repayments will stop until you're earning over this amount again.

**Best of all, if you successfully go on to complete a Higher Education qualification following an Access to University course, you won't have to pay the loan back at all.**

For more information, please visit: [www.gov.uk/advanced-learner-loan](http://www.gov.uk/advanced-learner-loan) or speak to someone from the college's student finance team on 01623 900 455.

If an Advanced Learner Loan is not required, you can apply for the 19+ Student Support Fund Bursary if your annual gross household income is below £29,000. If eligible you could be entitled to £50 a month in attendance-related bursary payments. In addition to this, you may be able to receive help with OFSTED registered childcare costs.

Please note that this information relates the current academic year. For the 23/24 academic year please check the college website for updates. Visit [wnc.ac.uk/finance](http://wnc.ac.uk/finance).



# HOW TO APPLY

Once your application has been received, we will get in touch to invite you in to meet the teaching team

## **Applying**

To apply, you will need to visit the college website, find your chosen course and click apply.

Once your application has been received, we will get in touch to organise an interview.

## **Keeping in Touch**

As soon as you have had your application accepted for the course you will be sent an email invitation to join our dedicated Microsoft Team for Access students. Designed to offer you exclusive and unique access to the course, this will enable you to build a unique connection with your subject tutors, college support services and your class mates before you even start with us.

Subject content and activities will be uploaded regularly so you can really get your head into the study mode as early as possible. You'll also have the opportunity to ask questions of not only student support services and your tutors, but also student mentors, all of whom have studied Access to University courses on each and every pathway.

## **Newsletters**

You'll then start to receive our monthly newsletter which will keep you up-to-date with events, university visits, student successes and other great things happening here at the college; again, helping you build that important connection before you arrive.

## **APPLY TODAY!**

Visit our website to submit your application or scan the code.



# APPLY TODAY!

Visit our website to submit your application.



**0808 100 3626**



**enquiries@wnc.ac.uk**



**wnc.ac.uk/access**



**wncaccesstouniversity**

